

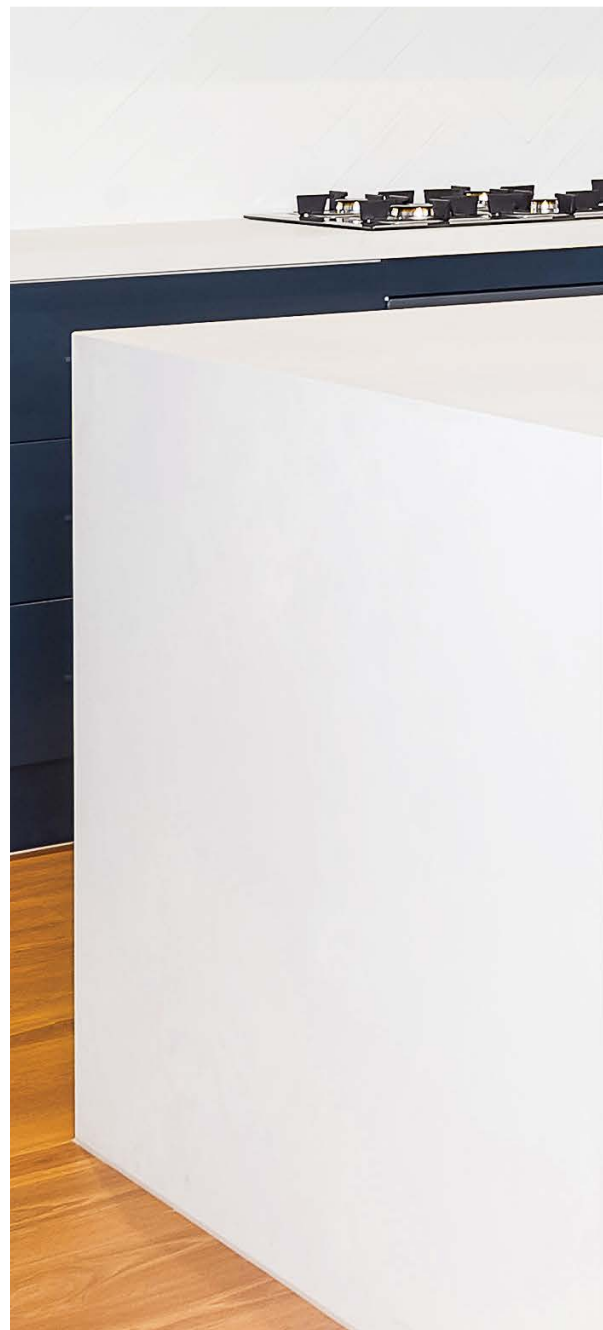


# Light up

YOUR LIFE







# Happy

## WITH HALLMARK

At Hallmark Homes, we have one simple goal - to make you happy. We want you to love everything about your new home and the way we built it. We know you've worked hard to get to this point, so now's the time to choose a builder you can truly count on.

Recognised as one of South East Queensland's most trusted builders, we go to great lengths to understand your individual needs, always delivering a high level of personal service. We genuinely care about our customers, and we think it shows in everything we do, from the smooth building process to the renowned level of workmanship and superb quality finishes in all our homes.

Quite simply, it's our job to get it right. And because we've been building quality family homes since 1982, we really know our stuff. Just ask some of our past customers why they keep coming back to Hallmark again and again. We're passionate about giving you more home for your money. And that's why we know you'll be happy you built with Hallmark!





# HOMES WITH heart

As a family-owned business, we know that home is at the heart of everything you do. It's where you celebrate life, love and togetherness. It's also where you kick back, relax and soak up the sunshine with friends and family. And we believe nobody understands the lifestyle here in South East Queensland better than us, because we're locals through and through.

## 10 REASONS TO BUILD WITH US.

Building a new home is one of life's most exciting milestones. But it's also one of life's biggest financial decisions – which means it's not a decision to be taken lightly. So here are ten great reasons you'll be happy you built with Hallmark.

1  
DECADES OF  
EXPERIENCE

It all began for us in 1982, when we successfully released an award-winning range of home designs – and we've never looked back. We're a solid, debt-free, family owned and operated business, with a long history of stability and a flawless record. But most of all, we're still as passionate about building homes now, as we were back then.

2  
HOME  
GROUND  
ADVANTAGE

Our extensive network of trusted local suppliers allows us to create significant cost efficiencies that can be passed on to you – so you get more home for your money.

3  
DESIGNS  
TO LOVE

Not a cookie cutter in sight here! Our popular home designs are created from scratch in our designers' studio – with lots of valuable, practical input from our entire team of experts. After all, we've got almost 40 years experience in the business, so why not use it!

4  
THE  
PERFECT  
FIT

We understand that families come in all shapes and sizes. So whether you're just starting out, a growing family, an investor or an empty nester, we have a home to suit you and the way you live.

5  
QUIETLY  
CONFIDENT

At Hallmark, we encourage you to talk to other builders and compare. After all, building a home is probably the biggest investment you'll ever make, and we want you to be 100% happy that you've chosen to build with Hallmark.

6  
WE GIVE IT TO  
YOU STRAIGHT

We tell it like it is. No confusing building terms – just simple, straightforward communication that makes sense. So if you've never built before or you've had a bad experience with another builder, you're going to love the way we do things.

7  
EASY AS

We make sure your build is a stress-free experience – from choosing the perfect design, right through to handing over the keys to your dream home. Our friendly team is here to support you, while our easy build process is streamlined for efficiency and transparency, so you always know what's going on.

8  
CUSTOMERS  
ON REPEAT

We're not trying to blow our own trumpet (well, maybe just a smidge), but a huge chunk of our business comes from repeat customers and referrals. Happy customers are our greatest source of new business, and we want to keep it that way!

9  
SMOOTH  
HANDOVER  
PROCESS

Because you've been kept in the loop every step of the way, there are no nasty surprises at handover. Just a real sense of excitement and pride, as you accept the keys to your brand new home. Happy days!

10  
30 YEAR  
STRUCTURAL  
GUARANTEE

At Hallmark, we're all about creating your happy place – now and in the future. That's why we provide a 30 year structural guarantee, so you enjoy total peace of mind and a home that will last for many, many years to come.





LIGHT UP YOUR  
*Life*



**INTRODUCING  
LUMA BY HALLMARK**

A brilliant new range of truly affordable homes, designed for the first home buyer who expects more. More style, more space, more flexibility and more luxury than ever before. So if you thought you couldn't afford the kind of home you've been dreaming of, think again. Luma has arrived and it's a game changer.



**DESIGNED TO SPARK YOUR IMAGINATION.**

Why feel constrained, when Luma gives you the freedom to reflect your personality in so many ways? Because one size doesn't fit all, we've created a selection of smart, beautifully designed, flexible floor plans, stunning façades and luxurious upgrade options that lets you customise your home to suit the way you want to live.





SHINE  
*bright*  
WITH LUMA.



At Hallmark Homes, we don't believe you should be constrained by budget. Just because you're a first home buyer doesn't mean you should have to settle for less. We knew there had to be a better way to give you what you want, so we started with a blank canvas and reimagined what was possible.

#### WANT A CLEVERLY DESIGNED HOME? YOU GOT IT.

Luma by Hallmark is different. Rather than working with an existing range and taking things out to suit your budget, our designers came up with a completely fresh new range of 23 premium home designs, featuring must have, on trend living concepts. Quite simply, you've got the best of the best to choose from, at the most affordable price possible.

#### WE LISTENED TO YOU.

We took the time to understand what you wanted in your new home and then worked out a way to make it happen. As a result, the Luma range is literally bursting with your most requested layouts, design features, inclusions and finishes, such as on trend façades, generous stone island benches, full sized laundries, plus much more.

#### HOW DOES LUMA WORK?

Luma's bespoke design system with interchangeable custom modules means you can mix and match to get exactly what you want, without blowing the budget. And with Luma, all the hard work has been done for you. Every single home design in the range is customisable, depending on what's important to you.

First, choose the floorplan that suits the way you want to live. Then, you can either go with it as is, or select from the custom-designed modules. It's so easy, and it's all pre-priced and ready to go, so you know exactly where you're at from the very start.

Luma by Hallmark – because it's your time to shine.







# LIVE IN *Luma*

With so many thoughtful designs, flexible options and Instagram-worthy features and finishes, you really are spoiled for choice. And clever 'zoned living' means there's plenty of room for everyone – even as your family grows.

Enjoy some well-deserved 'me time' in your luxurious Parents' Retreat, strategically located nowhere near the Kids' Activity Room!

Soak up the serenity in your freestanding bath - just one of the enviable extras in our very 'extra' ensuite custom option.

Embrace your inner Master Chef with a beautifully appointed walk-in pantry, complete with stunning stone benchtops.

Create the ultimate indoor/outdoor space, with super sleek stacker doors that open right up, allowing your living area to flow seamlessly out to your alfresco area.

This is just a taste of the fabulous options you can choose from. So why settle for dull and boring, when you can live life in glorious living colour with Luma by Hallmark?





## DESIGNER STYLE HAS NEVER BEEN *easier*

Once you've decided on your new Hallmark home, the next exciting step is your selection appointment at our dedicated customer selection centre. Select by Hallmark is where the vision for your new home really comes alive.

Here, you'll meet with your very own consultant, who will personally guide you through the latest trends and colour selections to create a home as individual as you are. At Select by Hallmark, you can experience an extensive range of Australia's leading brands, all under one roof – saving you time, money and lots of running around.

Together, we'll create the perfect look and feel for your beautiful new home.

*Select by Hallmark is exclusive to Hallmark Homes' clients, by appointment only.*







FIND THE  
*perfect*  
HOME FOR YOU

10 METRE LOT FRONTAGE RANGE

HOME	PAGE	SIZE m <sup>2</sup>	BED	LIVING	BATH	CAR
AMITY 143	16-17	142.84	3	1	2	1
CLOVELLY 157	18-19	156.94	4	1	2	1
CLOVELLY 168	20-21	167.35	4	1	2	1
MIAMI 186	22-23	186.12	4	3	2	1

12.5 METRE LOT FRONTAGE RANGE

HOME	PAGE	SIZE m <sup>2</sup>	BED	LIVING	BATH	CAR
PALM 222	28-29	221.42	4	3	2	2
BRONTE 231	30-31	230.41	4	3	2	2
BYRON 216	32-33	216.09	4	3	2	2
MIAMI 189	34-35	188.35	4	2	2	2
MIAMI 208	36-37	207.81	4	2	2	2
BONDI 227	38-39	226.39	4	3	2	2
BONDI 240	40-41	239.14	4	3	2	2
BONDI 245 V1	42-43	245.52	4	3	2	2
BONDI 245 V2	44-45	245.56	4	3	2	2
BANKSIA 216	46-47	215.90	4	3	2	2
BANKSIA 229 V1	48-49	228.54	4	3	2	2
BANKSIA 229 V2	50-51	228.54	4	3	2	2
BANKSIA 229 V3	52-53	228.54	4	3	2	2
COVE 202 V1	54-55	201.93	4	2	2	2
COVE 202 V2	56-57	201.93	4	2	2	2
COVE 206	58-59	205.41	3	3	2	2
COVE 217	60-61	216.56	4	2	2	2
MANLY 186	62-63	185.90	4	2	2	2
MANLY 200	64-65	200.04	4	2	2	2



LUMA RANGE FOR

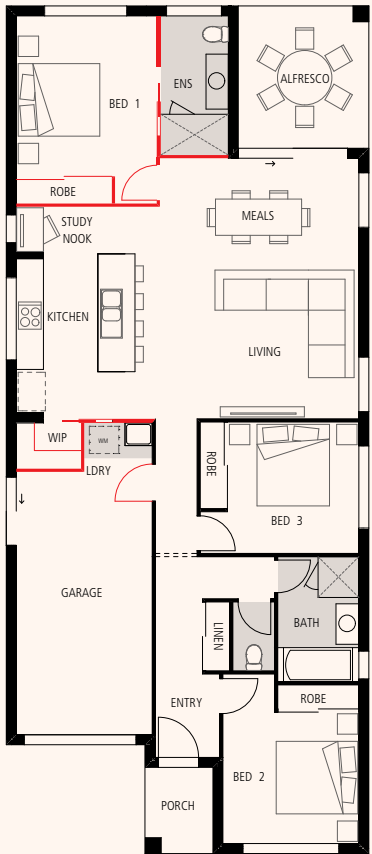
10 metre

**LOT FRONTAGE**

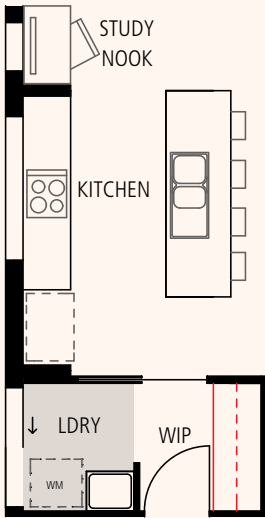
Luma by Hallmark offers a fabulous selection of home designs created specifically to make the most of lots with a 10 metre frontage. Once you've chosen the floor plan that suits your lifestyle, check out our stunning range of façade options on pages 24 and 25. There's sure to be a look that reflects your individual style!



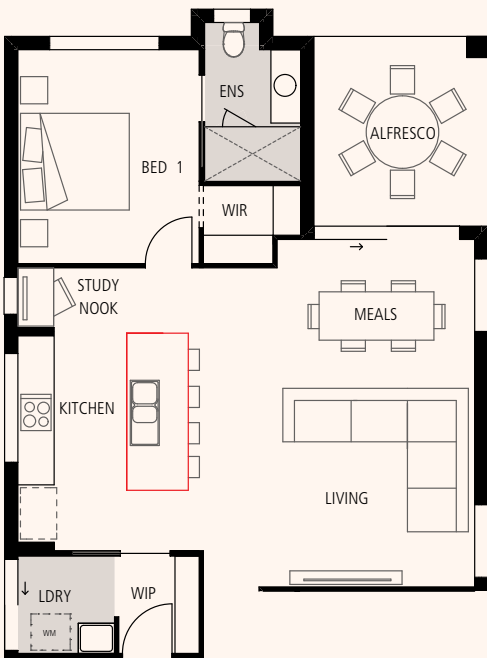
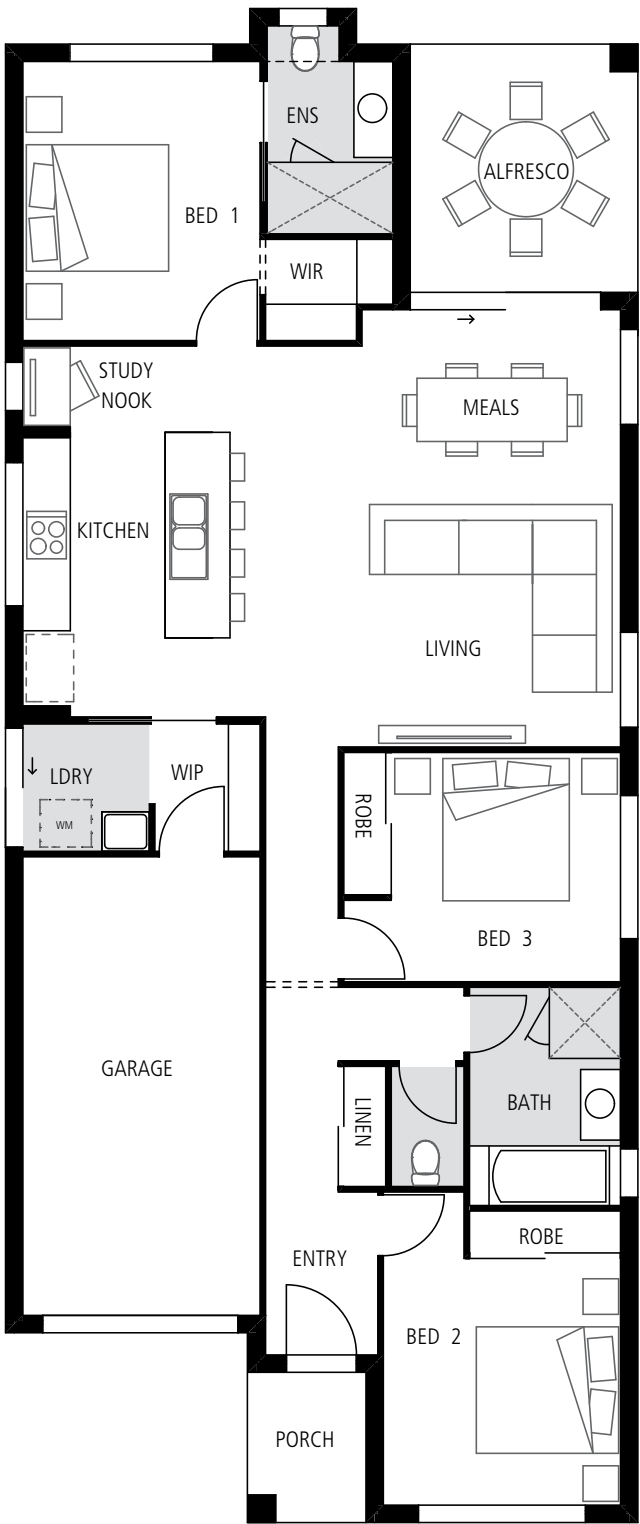




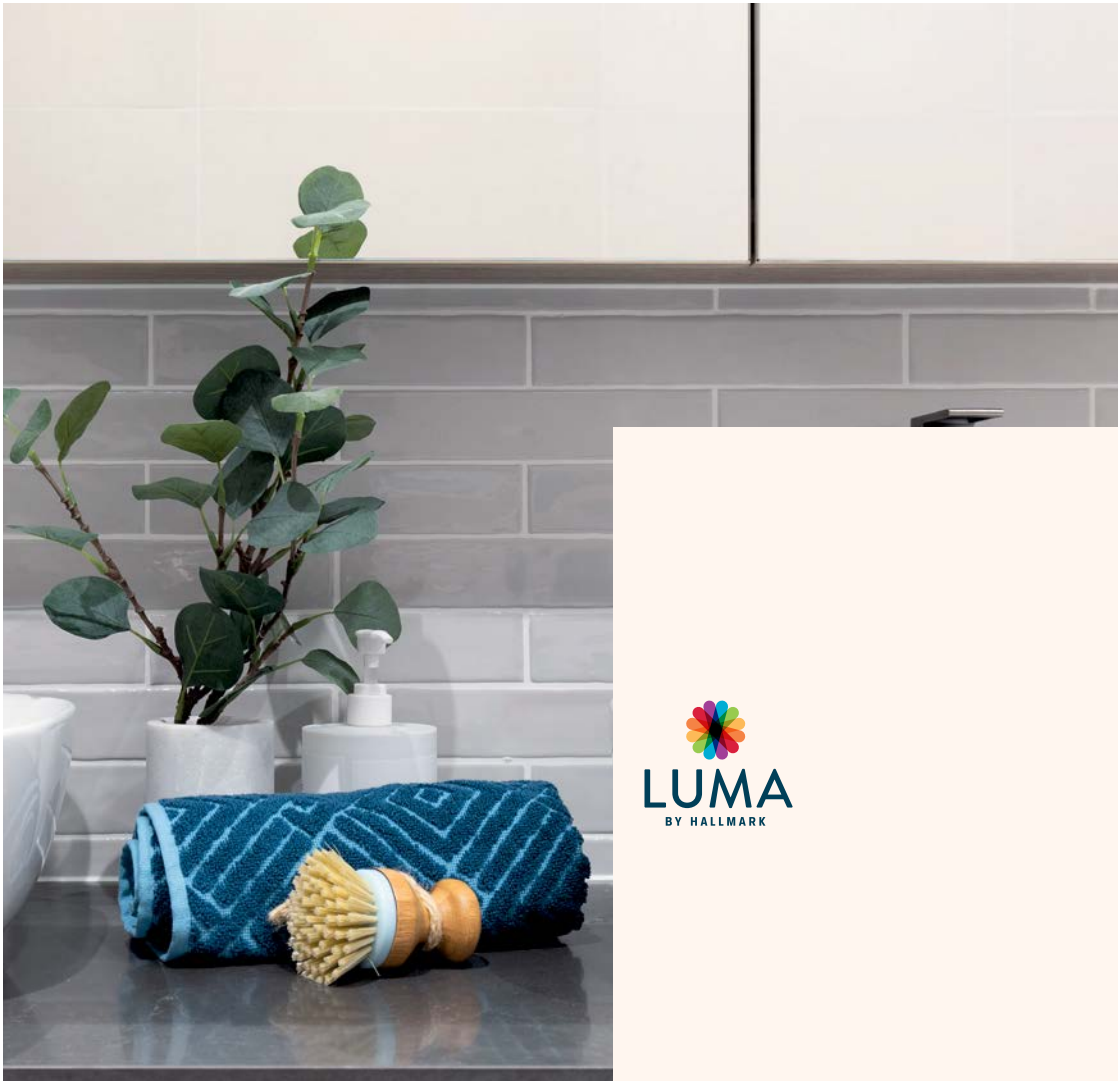
**ALTERNATE BED 1 & LAUNDRY LAYOUT**  
Alternate ensuite & robe to bed 1  
(1200mm x 600mm ensuite window)  
+ alternate laundry & walk-in pantry



**WALK-IN PANTRY UPGRADE**  
+ stone bench + overhead cupboards



**KITCHEN ISLAND UPGRADE**  
1200mm wide kitchen island



	3		1
	2		1

LENGTH 19.15m  
WIDTH 8.00m  
TOTAL FLOOR AREA  
**142.84m<sup>2</sup>**  
MIN. FRONTAGE  
**10m**

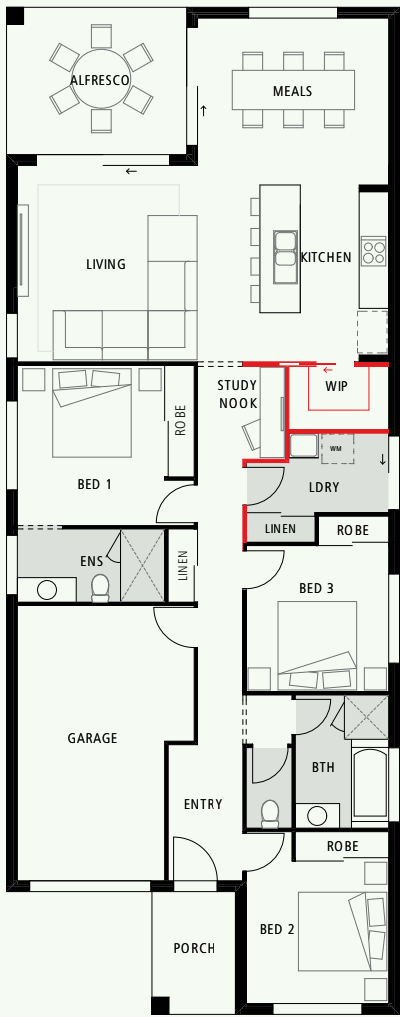
BED 1	3.5 x 3.0
BED 2	3.0 x 2.9
BED 3	2.9 x 2.9
ALFRESCO	3.1 x 2.8
STUDY	1.5 x 1.0
MEALS	3.2 x 1.9
KITCHEN	3.6 x 2.4
LIVING	3.6 x 3.2
GARAGE	5.6 x 3.0

*Amity*  
**143**

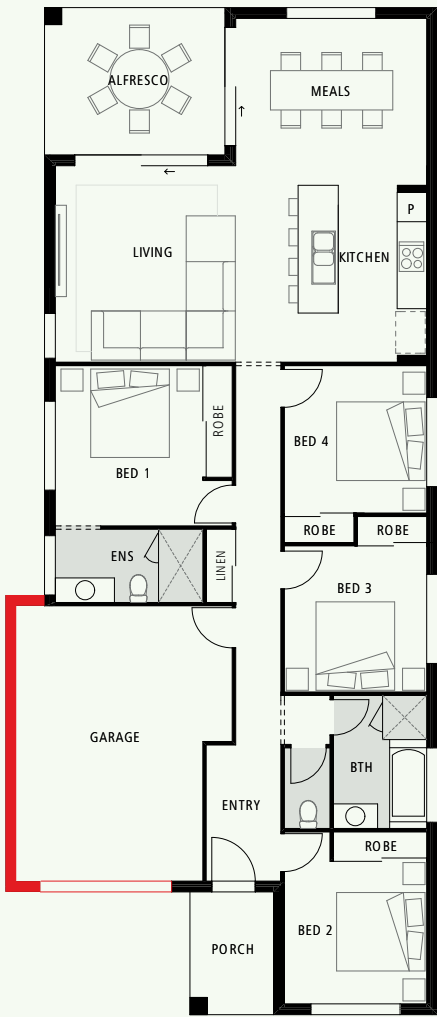
This versatile home features an open plan kitchen, living and dining room flowing on to a spacious alfresco area, making indoor-outdoor living a breeze. The handy study nook is cleverly positioned near the kitchen - the perfect spot to park your laptop, or keep an eye on the kids while they do their homework. Designed with privacy in mind, the master bedroom features a walk-in robe and well-appointed ensuite.

All plans are copyright, no part may be used, reproduced or copied by any means or in any form without the prior permission of the copyright owner. Plans are subject to change without notice. Dimensions may vary depending on façade style. Images and plans are not to scale. Furniture including desks and study nooks are illustrative only and are not included. Refer to working drawings for scaled floor plan. Please contact a New Home Consultant for further information.

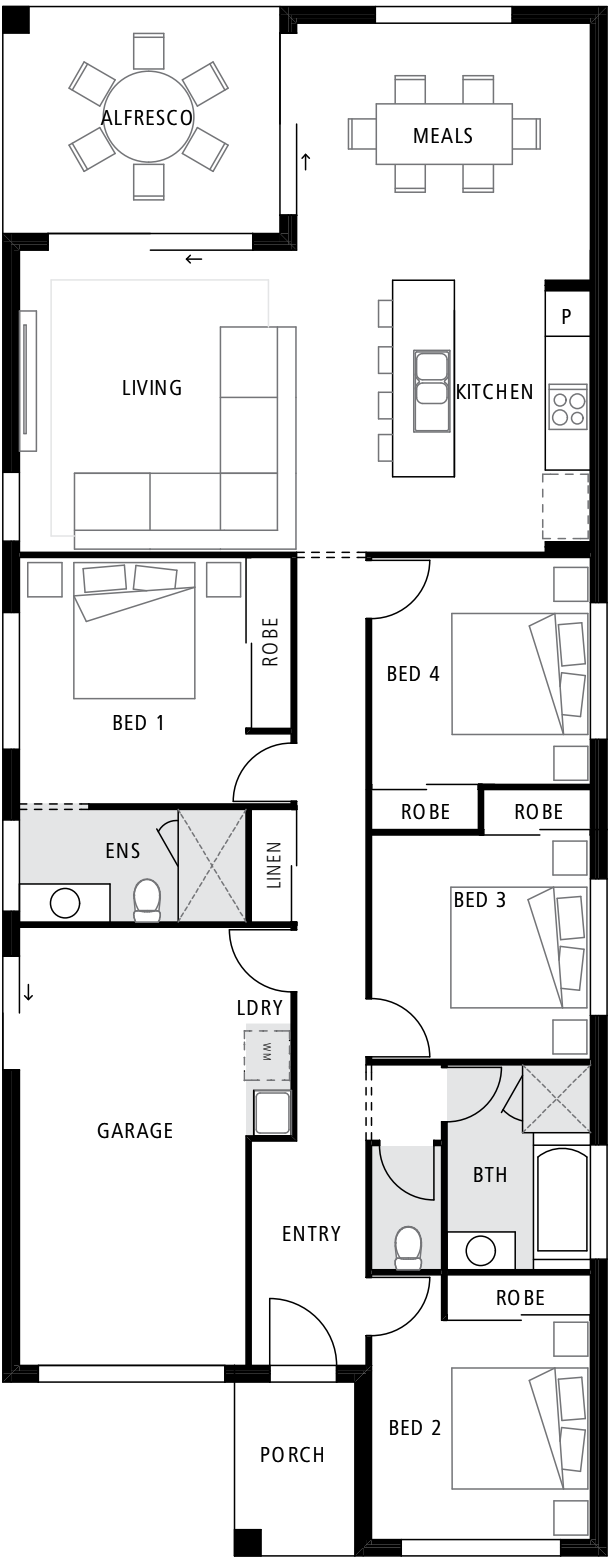




**ALTERNATE 3 BEDROOM LAYOUT**  
Replace bed 4 with a full size laundry  
+ walk-in pantry + study nook



**GARAGE UPGRADE**  
Widen the garage by 800mm + 2.6m garage door



**POSTLESS STACKER DOOR OPTION**  
Modify the living/alfresco to feature 3.1m  
+ 2.7m postless stacker doors



4	1
2	1

LENGTH 20.50m  
WIDTH 8.00m

TOTAL FLOOR AREA  
156.94m<sup>2</sup>

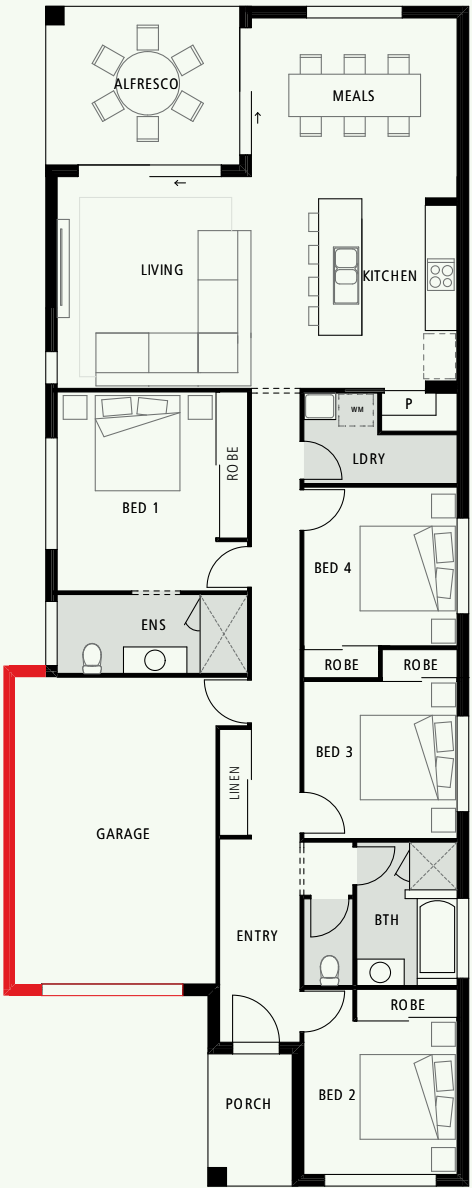
MIN. FRONTAGE  
10m

BED 1	3.2 x 3.0
BED 2	2.9 x 2.9
BED 3	2.9 x 2.9
BED 4	3.0 x 2.9
ALFRESCO	3.5 x 3.0
MEALS	3.8 x 3.0
KITCHEN	3.8 x 2.8
LIVING	4.0 x 3.8
GARAGE	5.6 x 3.0

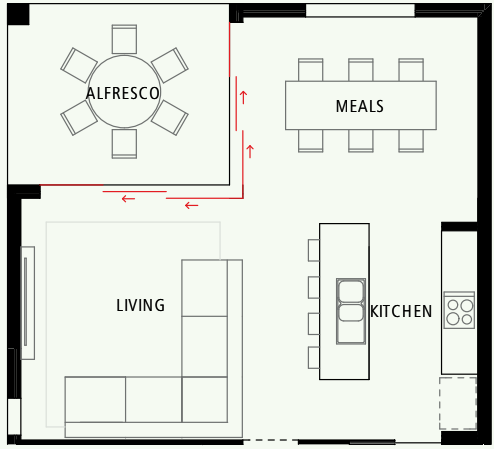
*Clovelly*  
**157**

Bright, breezy and versatile, this impressive home is perfect for a busy couple or young family. The living and dining area opens onto the alfresco, with the option of adding postless stacker doors to seamlessly bring the outside in. You'll love the spacious stone island bench in the kitchen, where family and friends can pull up a stool for a chat, while you cook up a storm. If you love relaxed entertaining, this home is the perfect design for you!

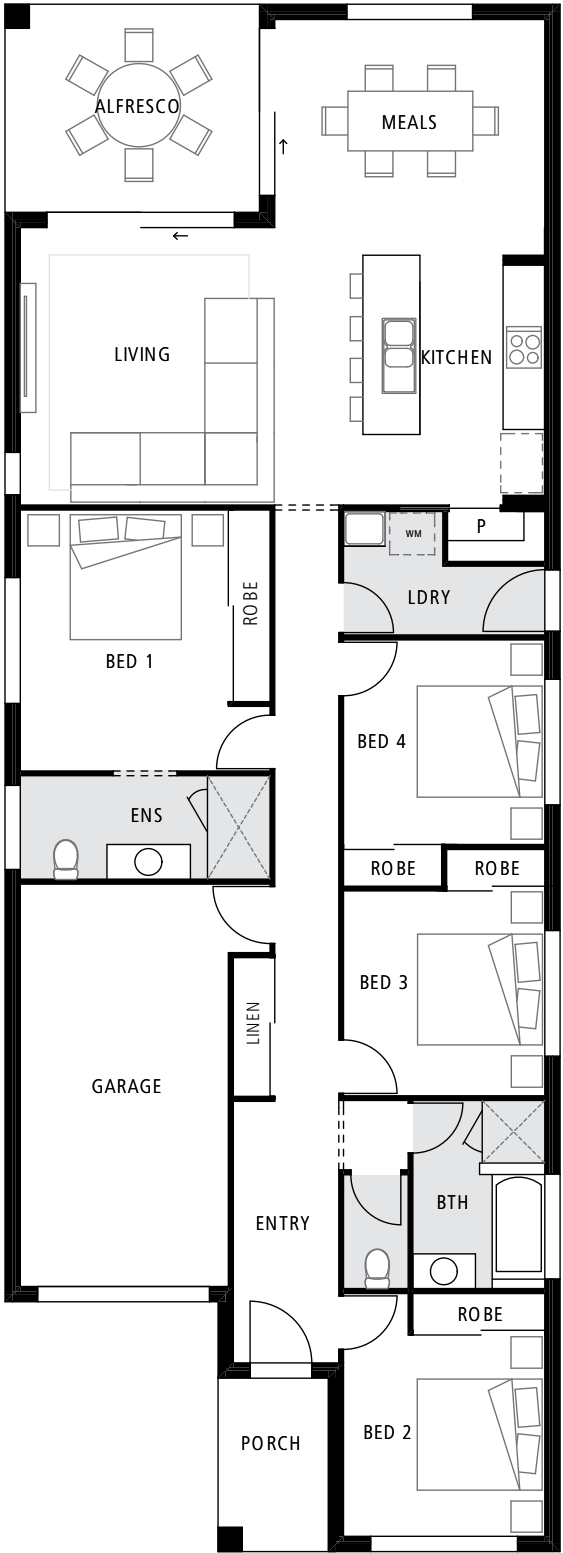




**GARAGE UPGRADE**  
Widen the garage by 800mm + 2.6m garage door



**POSTLESS STACKER DOOR OPTION**  
Modify the living/alfresco to feature 3.1m + 2.7m postless stacker doors



**SPLASHBACK WINDOW**  
1.8m splashback window to the kitchen



 4	 1
 2	 1

LENGTH 22.30m  
WIDTH 8.00m  
TOTAL FLOOR AREA  
**167.35m<sup>2</sup>**  
MIN. FRONTAGE  
**10m**

BED 1	3.2 x 3.0
BED 2	2.9 x 2.9
BED 3	2.9 x 2.9
BED 4	3.0 x 2.9
ALFRESCO	3.5 x 3.0
MEALS	3.8 x 3.0
KITCHEN	3.8 x 2.8
LIVING	4.0 x 3.8
GARAGE	5.6 x 3.0

*Clovelly*  
**168**

This cleverly designed home features an open plan kitchen, living and dining area that spills out to the alfresco to create a relaxed hub for spending quality time with family and friends. The stylish kitchen features a versatile stone island bench and a large pantry, while the laundry is close by making multi-tasking easy! At the end of the day, retreat to your spacious master bedroom with its own private ensuite including a luxuriously oversized shower.



**GARAGE STORAGE OPTION**





Reduce the entry, giving more space to the garage

**KITCHEN ISLAND UPGRADE**

Increase the kitchen island bench to 3m

**BARN DOORS TO MEDIA ROOM**



	4		3
	2		1
LENGTH 23.40m			
WIDTH 8.80m			
TOTAL FLOOR AREA			
186.12m <sup>2</sup>			
MIN. FRONTAGE			
10m			
BED 1		3.2 x 3.0	
BED 2		3.3 x 2.9	
BED 3		3.1 x 2.7	
BED 4		3.1 x 2.7	
ACTIVITY		3.0 x 3.3	
ALFRESCO		3.2 x 3.1	
MEDIA		3.2 x 3.1	
MEALS		3.5 x 2.4	
KITCHEN		3.2 x 2.6	
LIVING		4.3 x 3.8	
GARAGE		5.6 x 3.0	

# Miami

186

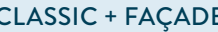
This home boasts three separate living areas, giving everyone the space they need. There's the option to add a stylish barn door to the media room, just in case you want to pump up the volume for movie night! Or, you may choose to upsize the kitchen stone island bench to a whopping 3 metres. When you need a little 'me' time, head to your spacious master suite, complete with ensuite and walk-in robe.

All plans are copyright, no part may be used, reproduced or copied by any means or in any form without the prior permission of the copyright owner. Plans are subject to change without notice. Dimensions may vary depending on façade style. Images and plans are not to scale. Furniture including desks and study nooks are illustrative only and are not included. Refer to working drawings for scaled floor plan. Please contact a New Home Consultant for further information.



## FOR 10 METRE LOT FRONTAGE

Now that you've chosen the perfect floor plan for you and your family, it's time to select the façade for your brand new home. Designed for maximum street appeal, there are five stunning façades to choose from. Which one reflects your style?





LUMA RANGE FOR

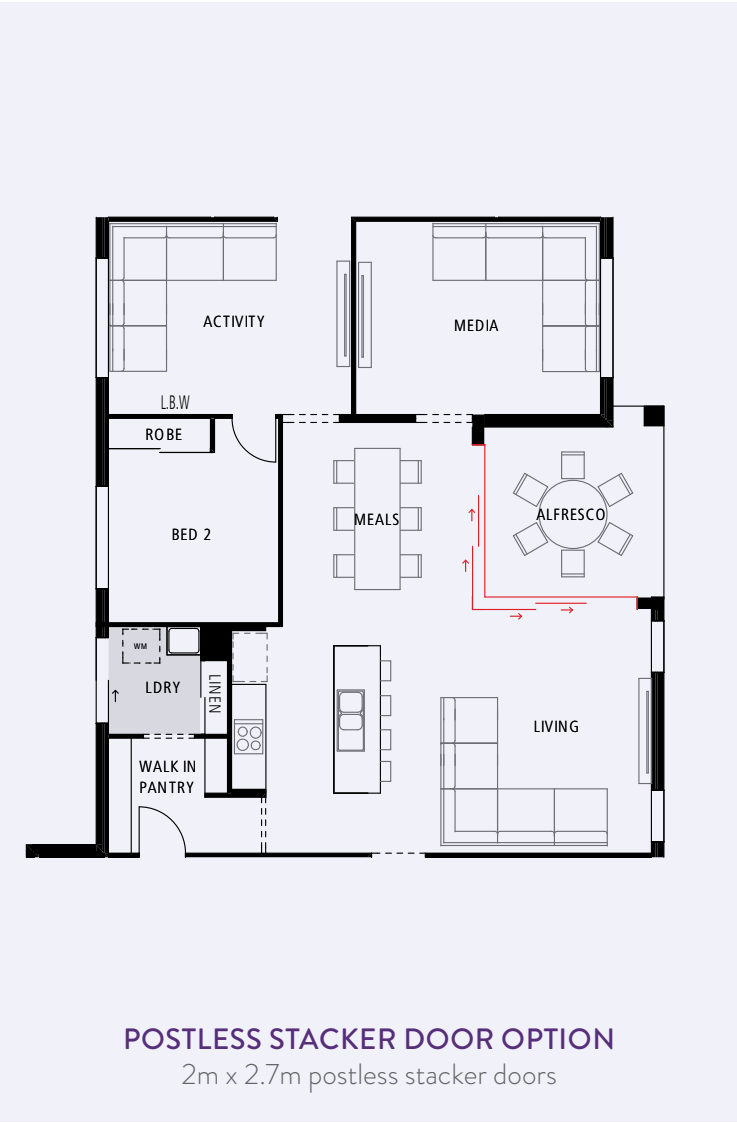
12.5 metre

**LOT FRONTAGE**

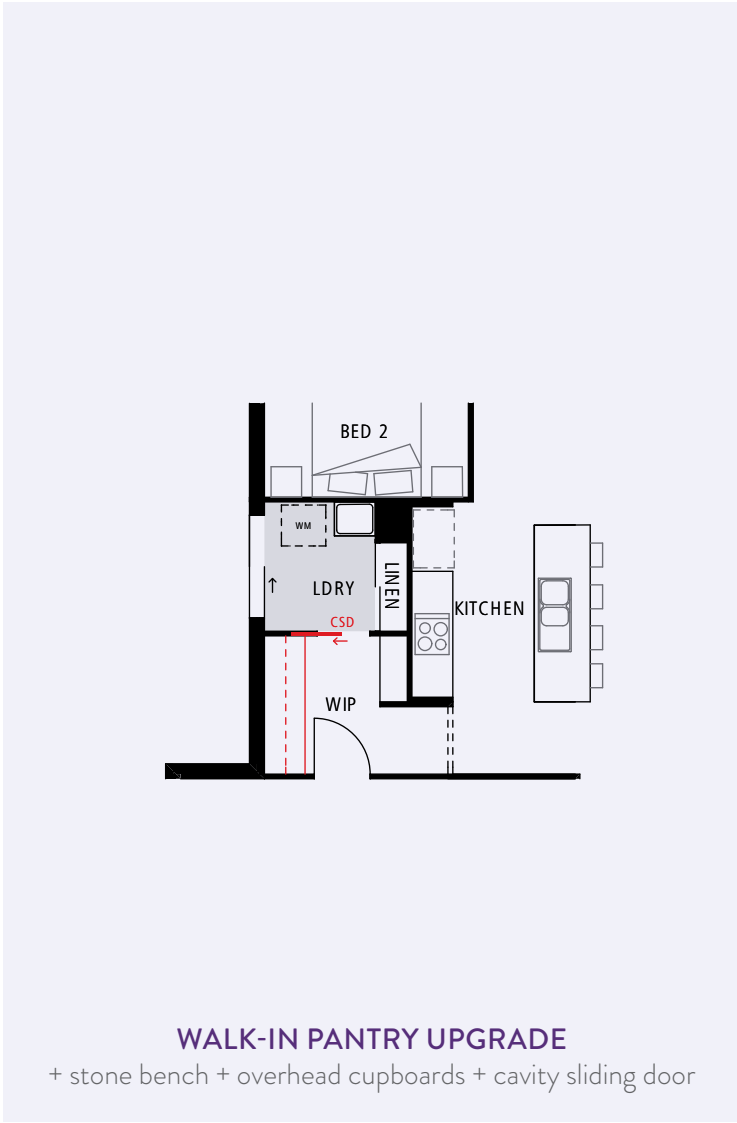
Luma by Hallmark provides a brilliant range of floor plans designed to sit perfectly on a lot with a 12.5 metre frontage. You'll be spoilt for choice with our flexible range of home designs, not to mention our latest selection of beautiful façades for you to choose from. Discover a look that you'll love on pages 66 and 67.



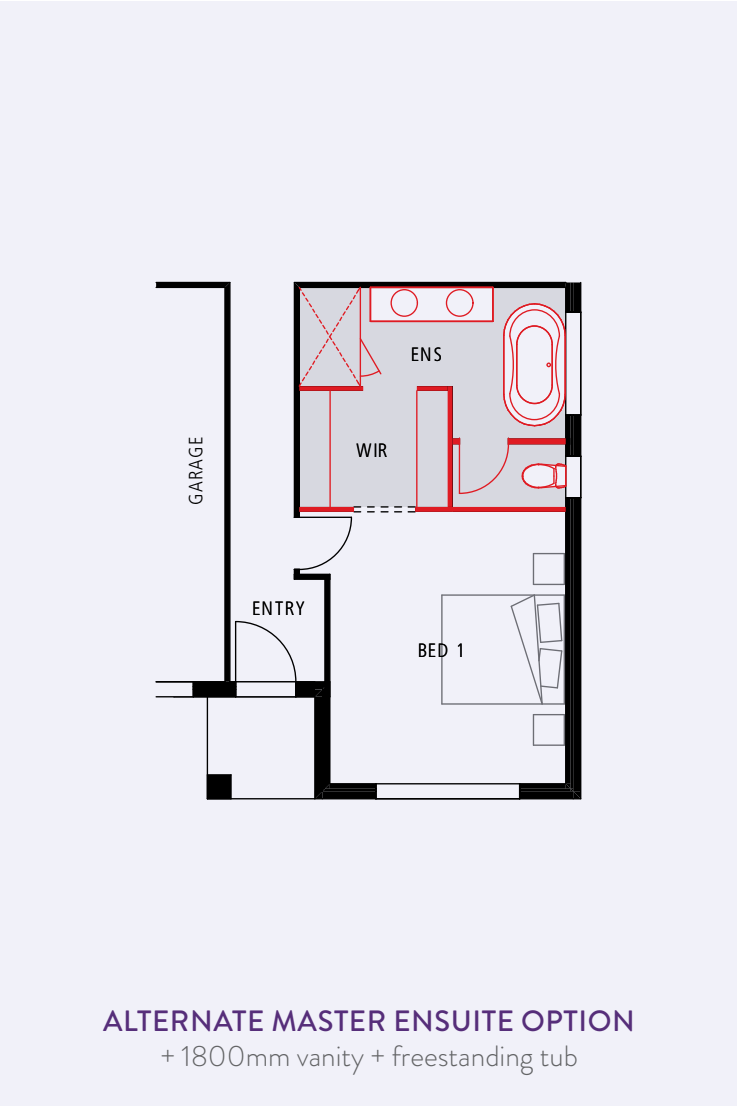




POSTLESS STACKER DOOR OPTION  
2m x 2.7m postless stacker doors



WALK-IN PANTRY UPGRADE  
+ stone bench + overhead cupboards + cavity sliding door



ALTERNATE MASTER ENSUITE OPTION  
+ 1800mm vanity + freestanding tub



4	3
2	2

LENGTH 23.00m  
WIDTH 11.25m

TOTAL FLOOR AREA  
221.42m<sup>2</sup>

MIN. FRONTAGE  
12.5m

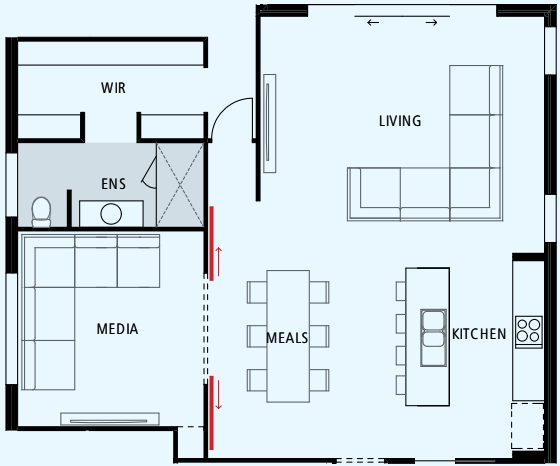
BED 1	4.4 x 3.7
BED 2	3.0 x 3.0
BED 3	3.0 x 3.0
BED 4	3.0 x 3.0
ALFRESCO	3.1 x 3.0
ACTIVITY	4.2 x 3.4
MEDIA	4.3 x 3.4
MEALS	3.3 x 3.0
KITCHEN	2.7 x 2.4
LIVING	4.3 x 3.4
GARAGE	5.8 x 5.8

*Palm*  
222

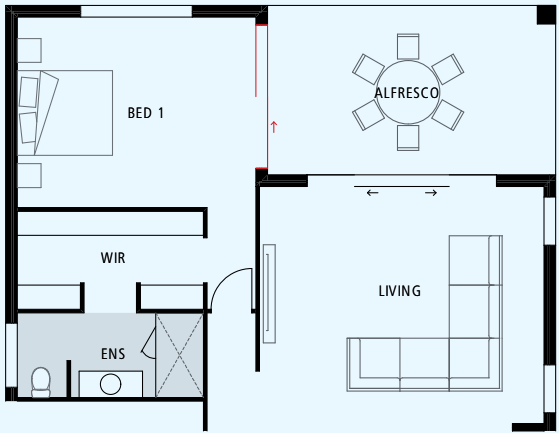
This spacious home has been cleverly designed with different zones, providing space for growing families. The living and dining areas enjoy an abundance of natural light and cool breezes, thanks to the centrally positioned alfresco. The kitchen features a large walk-in pantry, which connects to the laundry and garage - ideal for unloading groceries. The dedicated kids zone has an activity area adjoining the three bedrooms. The best part, the parents' retreat is a private sanctuary, perfectly positioned away from all living areas.

All plans are copyright, no part may be used, reproduced or copied by any means or in any form without the prior permission of the copyright owner. Plans are subject to change without notice. Dimensions may vary depending on façade style. Images and plans are not to scale. Furniture including desks and study nooks are illustrative only and are not included. Refer to working drawings for scaled floor plan. Please contact a New Home Consultant for further information.

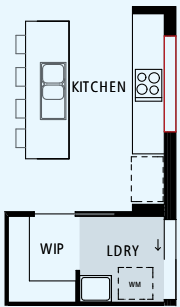




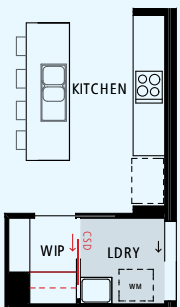
BARN DOORS TO MEDIA



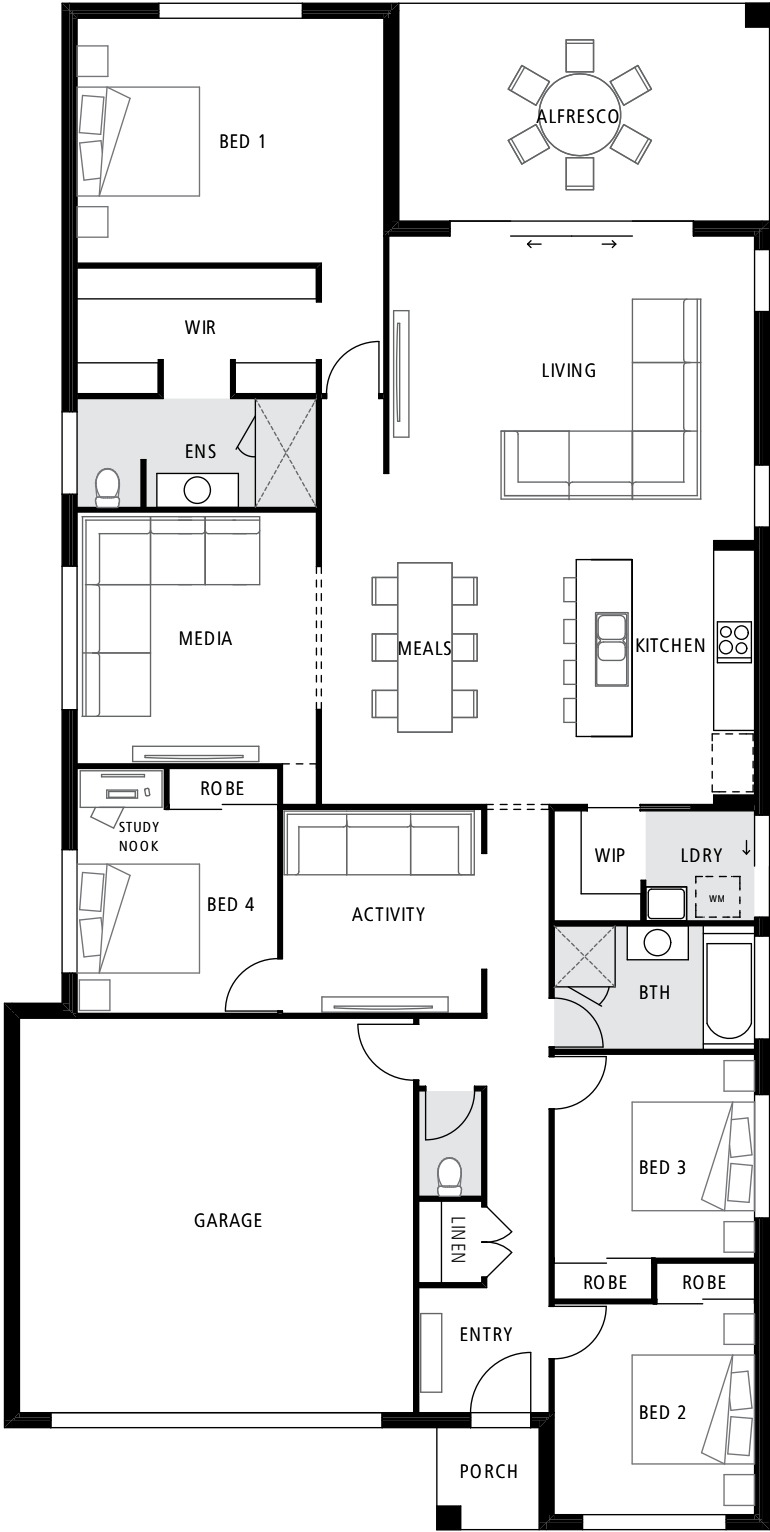
SLIDING DOOR TO BED 1  
2.7m sliding door to bed 1



KITCHEN  
SPLASHBACK WINDOW  
1.8m splashback window to kitchen



WALK-IN PANTRY UPGRADE  
+ stone bench + overhead cupboards  
+ cavity sliding door



 4	 3
 2	 2

LENGTH 22.44m  
WIDTH 11.25m

TOTAL FLOOR AREA  
230.41m<sup>2</sup>

MIN. FRONTAGE  
12.5m

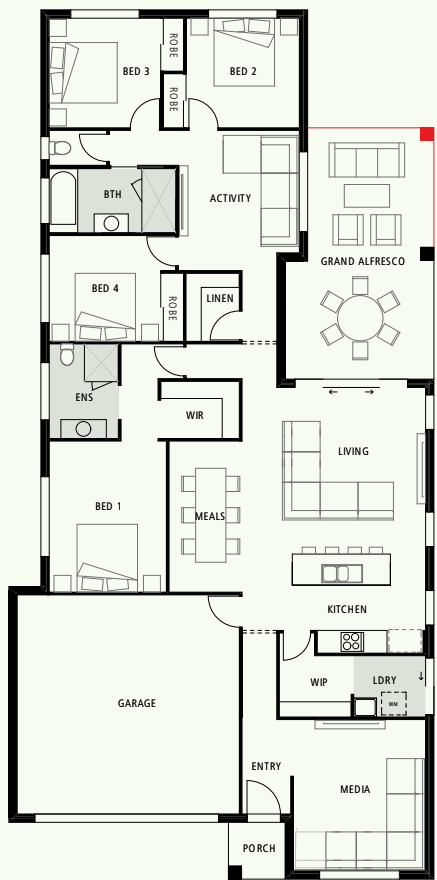
BED 1	4.5 x 3.6
BED 2	3.1 x 2.9
BED 3	3.0 x 2.9
BED 4	3.0 x 2.9
ALFRESCO	5.4 x 3.2
ACTIVITY	3.0 x 2.9
MEDIA	3.7 x 3.4
MEALS	3.7 x 2.6
KITCHEN	3.6 x 2.6
LIVING	5.3 x 4.4
GARAGE	5.8 x 5.8

*Bronte*  
231

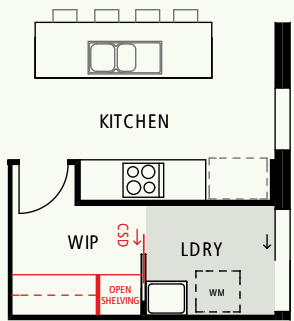
The master suite is the star of the show in this home! The spacious bedroom, luxurious walk-in robe and oversized ensuite make it the perfect retreat to escape to at the end of a busy day. The contemporary kitchen features a walk-in pantry conveniently connected to the laundry, while the living and meals area spills out onto a large alfresco. With a separate media room and versatile activity room, this gorgeous home leaves nothing to be desired.

All plans are copyright, no part may be used, reproduced or copied by any means or in any form without the prior permission of the copyright owner. Plans are subject to change without notice. Dimensions may vary depending on façade style. Images and plans are not to scale. Furniture including desks and study nooks are illustrative only and are not included. Refer to working drawings for scaled floor plan. Please contact a New Home Consultant for further information.





**GRAND ALFRESCO UPGRADE**  
3.16m x 3.34m (10.55m<sup>2</sup>) alfresco addition



**WALK-IN PANTRY UPGRADE**  
+ stone bench + overhead cupboards  
+ open shelving food store + pocket door



 4	 3
 2	 2

LENGTH 23.00m  
WIDTH 11.25m

TOTAL FLOOR AREA  
**216.09m<sup>2</sup>**

MIN. FRONTAGE  
**12.5m**

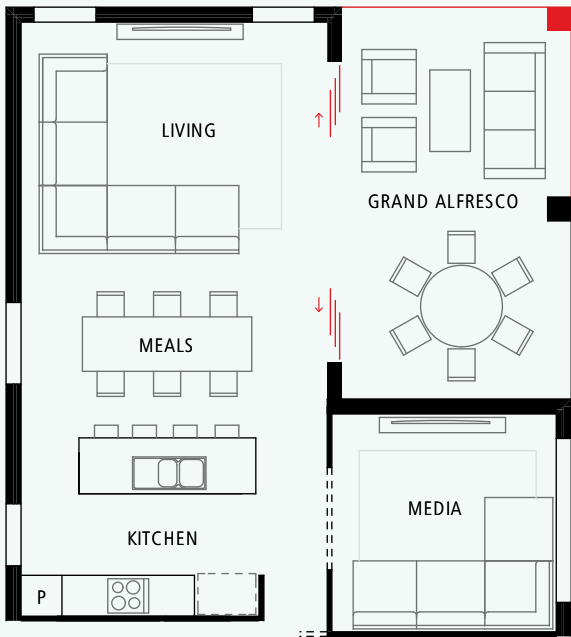
BED 1	4.0 x 3.1
BED 2	3.0 x 2.9
BED 3	2.9 x 2.9
BED 4	2.9 x 2.8
ALFRESCO	3.9 x 3.4
ACTIVITY	3.7 x 3.2
MEDIA	4.0 x 3.5
MEALS	4.0 x 1.9
KITCHEN	3.6 x 2.6
LIVING	4.0 x 4.0
GARAGE	5.8 x 5.8

*Byron*  
**216**

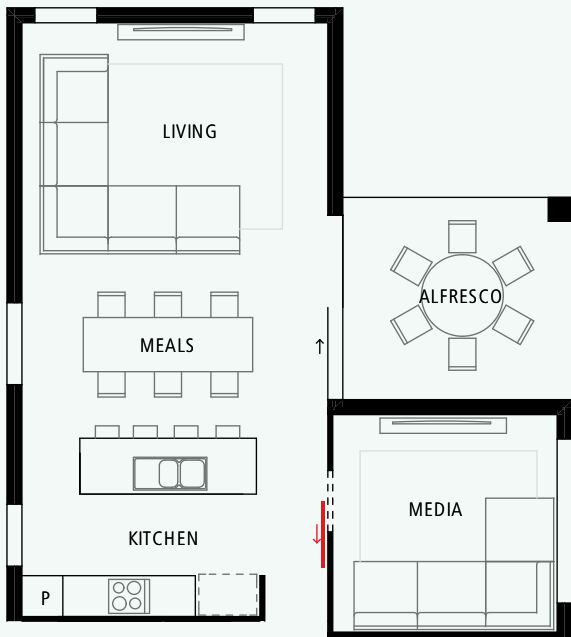
This stunning home has a fantastic flow throughout. You'll love the versatility of three separate living areas, plus the option to relax outdoors on the alfresco. A beautiful kitchen with a stone island bench and a large walk-in pantry provides easy access to the laundry. The kids' zone includes three bedrooms centred around an activity room and handy walk-in linen cupboard with ample storage. The master suite features a generous walk-in robe and ensuite.

All plans are copyright, no part may be used, reproduced or copied by any means or in any form without the prior permission of the copyright owner. Plans are subject to change without notice. Dimensions may vary depending on façade style. Images and plans are not to scale. Furniture including desks and study nooks are illustrative only and are not included. Refer to working drawings for scaled floor plan. Please contact a New Home Consultant for further information.

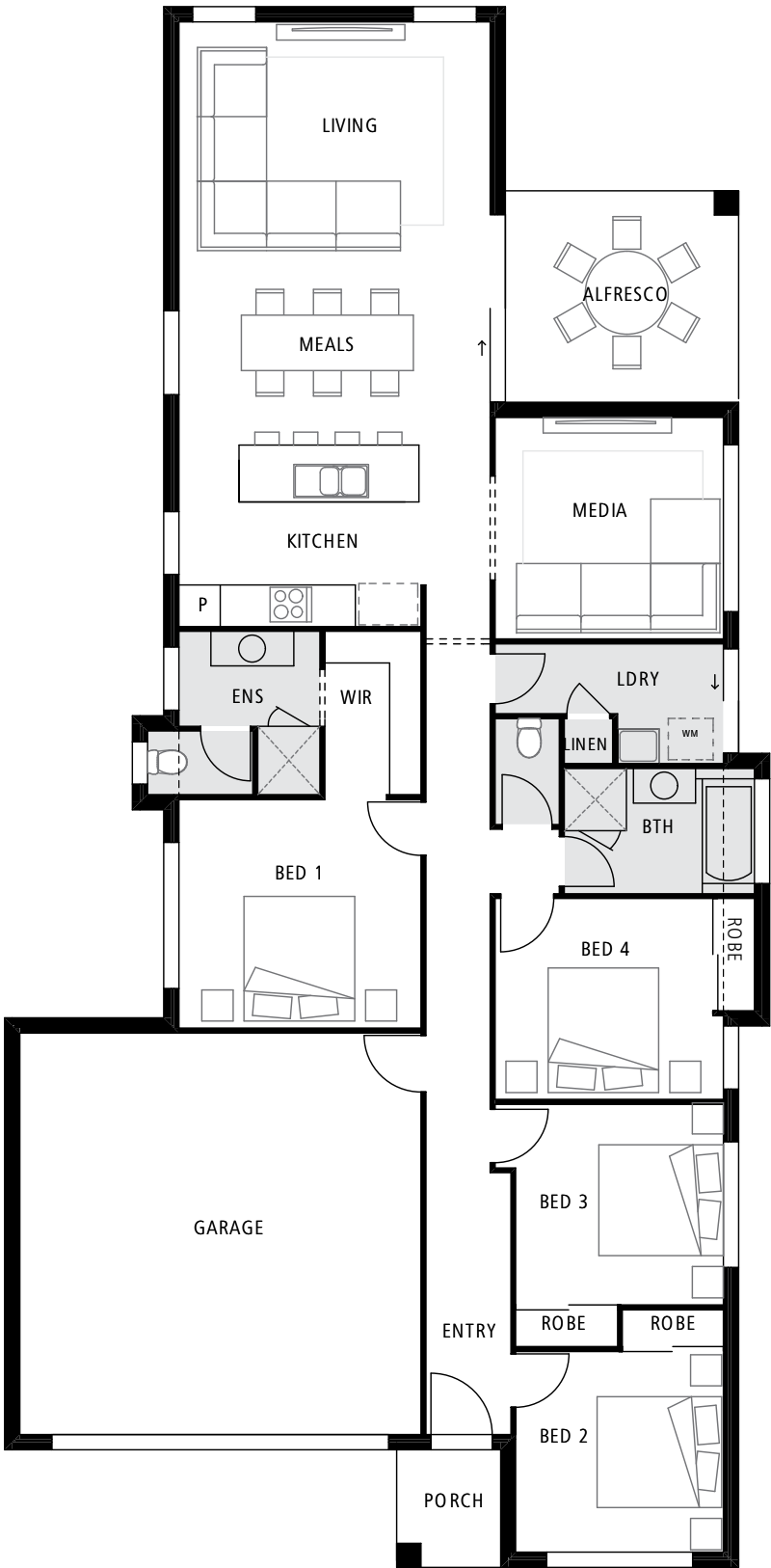




**GRAND ALFRESCO + SLIDING DOOR UPGRADE**  
2.76m x 3.37m (9.3m<sup>2</sup>) alfresco addition  
& 4.4m stacker door upgrade to living



**BARN DOORS TO MEDIA**  
Single barn door upgrade with 900mm hamper opening



 4	 2
 2	 2

LENGTH 22.54m  
WIDTH 11.06m

TOTAL FLOOR AREA  
**188.35m<sup>2</sup>**

MIN. FRONTAGE  
**12.5m**

BED 1	3.5 x 3.3
BED 2	3.0 x 2.9
BED 3	3.0 x 2.9
BED 4	3.1 x 2.9
ALFRESCO	3.3 x 3.0
MEDIA	3.3 x 3.2
MEALS	4.5 x 2.1
KITCHEN	3.5 x 2.8
LIVING	4.5 x 3.8
GARAGE	5.8 x 5.8

*Miami*  
**189**

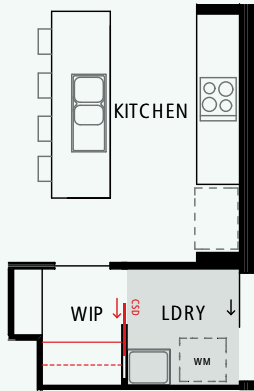
The entrance to this home creates a stunning first impression, as you take in the full length of this expansive design. The gourmet kitchen with a stone island bench sits perfectly between the living and dining areas and spacious media room, with the option of a barn door upgrade for added privacy. And you'll love entertaining on the alfresco in our beautiful Queensland weather. At day's end, retreat to your generously sized master suite, complete with walk-in robe and ensuite.

All plans are copyright, no part may be used, reproduced or copied by any means or in any form without the prior permission of the copyright owner. Plans are subject to change without notice. Dimensions may vary depending on façade style. Images and plans are not to scale. Furniture including desks and study nooks are illustrative only and are not included. Refer to working drawings for scaled floor plan. Please contact a New Home Consultant for further information.





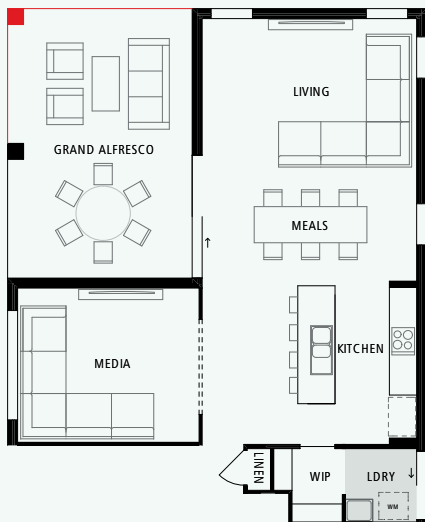
BARN DOORS TO MEDIA



WALK-IN PANTRY UPGRADE  
+ stone bench + overhead cupboards + pocket door



SPLASHBACK WINDOW  
1.8m splashback window to kitchen option



GRAND ALFRESCO UPGRADE  
2.89m x 4.07m (11.76m²) alfresco addition



4	2
2	2

LENGTH 23.25m  
WIDTH 11.04m  
TOTAL FLOOR AREA  
**207.81m<sup>2</sup>**  
MIN. FRONTAGE  
**12.5m**

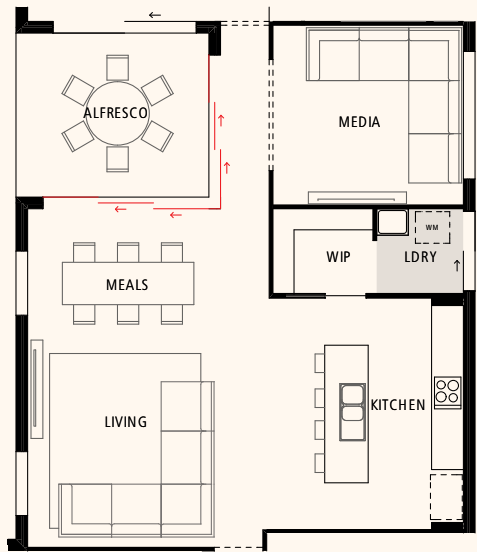
BED 1	4.0 x 3.3
BED 2	3.1 x 3.0
BED 3	3.1 x 3.0
BED 4	3.1 x 3.0
ALFRESCO	4.0 x 3.0
MEDIA	4.0 x 3.4
MEALS	4.7 x 2.2
KITCHEN	3.6 x 2.7
LIVING	4.7 x 3.6
GARAGE	5.8 x 5.8

*Miami*  
**208**

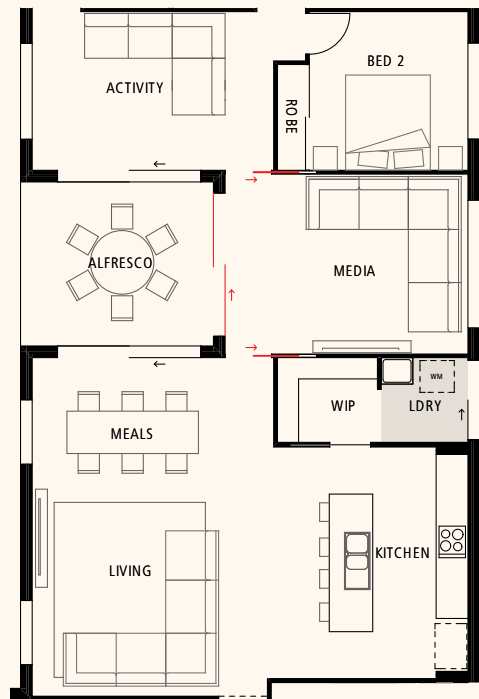
The kitchen is at the heart of this striking home, perfectly positioned between the media room and living and dining areas. You'll love the large walk-in pantry connected to the laundry. The alfresco adjoins the living areas, with the option to create a grand alfresco - adding nearly 12m<sup>2</sup> of living space! Ideal for growing families, there's ample room to relax in the master suite with walk-in robe and ensuite, while the kids' bedrooms are just a few steps away.

All plans are copyright, no part may be used, reproduced or copied by any means or in any form without the prior permission of the copyright owner. Plans are subject to change without notice. Dimensions may vary depending on façade style. Images and plans are not to scale. Furniture including desks and study nooks are illustrative only and are not included. Refer to working drawings for scaled floor plan. Please contact a New Home Consultant for further information.

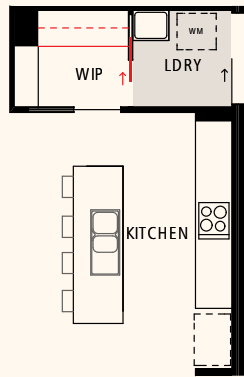




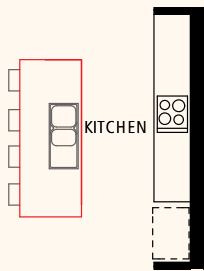
**POSTLESS STACKER DOORS**  
Add 3.1m and 2.7m postless stacker doors to the alfresco



**ALTERNATE MEDIA ROOM**  
Remove the wall enclosing the media room  
+ add a 2.7m sliding door to alfresco  
+ add two 820mm cavity sliders



**SPLASHBACK WINDOW**  
Add a 1800mm wide splashback window to the kitchen



**WALK-IN PANTRY UPGRADE**  
+ stone bench  
+ overhead cupboards  
+ pocket door to laundry

**KITCHEN ISLAND UPGRADE**  
1200mm wide island bench option



 4	 3
 2	 2

LENGTH 24.80m  
WIDTH 11.25m

TOTAL FLOOR AREA  
**226.39m<sup>2</sup>**

MIN. FRONTAGE  
**12.5m**

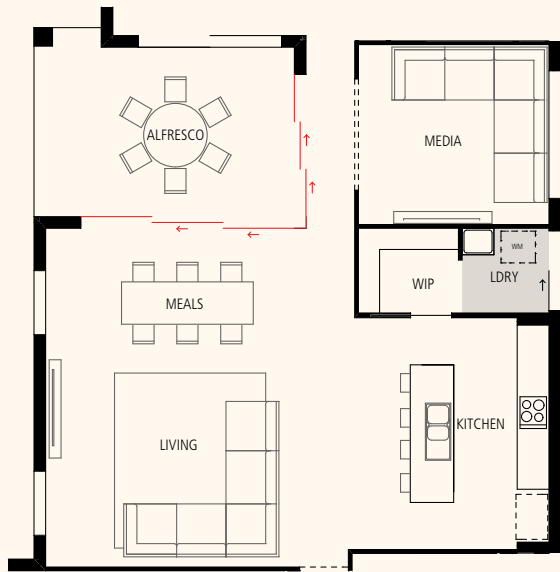
BED 1	4.2 x 3.4
BED 2	3.0 x 3.0
BED 3	3.4 x 3.0
BED 4	3.1 x 2.9
ALFRESCO	3.6 x 3.1
ACTIVITY	3.0 x 3.0
MEDIA	3.6 x 3.4
MEALS	3.6 x 2.4
KITCHEN	4.1 x 3.1
LIVING	4.0 x 3.5
GARAGE	5.8 x 5.8

*Bondi*  
**227**

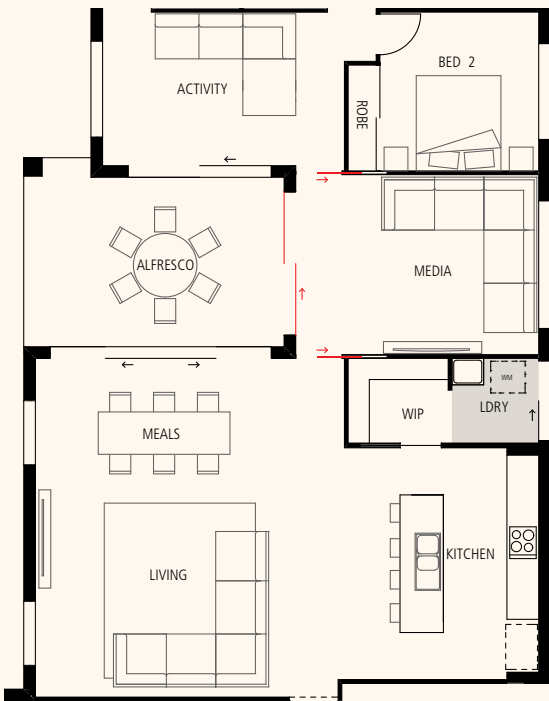
This stunning home has ample space for everyone to kick back and relax. The centrally located alfresco fills the interior with an abundance of natural light and the option to add postless stacker doors to the alfresco will instantly open up the living areas and create a grand feeling of space. Enjoy your favourite movie in the separate media room, while the kids make the most of the handy activity area adjoining three generous bedrooms.

All plans are copyright, no part may be used, reproduced or copied by any means or in any form without the prior permission of the copyright owner. Plans are subject to change without notice. Dimensions may vary depending on façade style. Images and plans are not to scale. Furniture including desks and study nooks are illustrative only and are not included. Refer to working drawings for scaled floor plan. Please contact a New Home Consultant for further information.

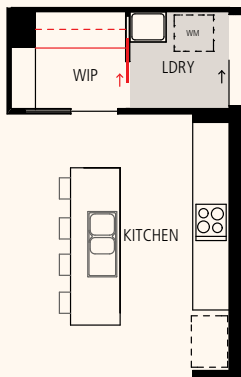




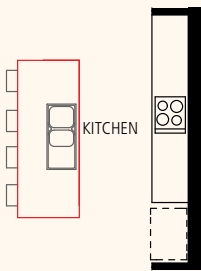
**POSTLESS STACKER DOORS**  
Add 4.0m and 2.7m postless stacker doors to the alfresco



**ALTERNATE MEDIA ROOM**  
Remove the wall enclosing the media room + add a 2.7m sliding door to alfresco + add two 820mm cavity sliders



**SPLASHBACK WINDOW**  
Add a 2400mm wide splashback window to the kitchen



**KITCHEN ISLAND UPGRADE**  
Add a 1200mm wide island bench to kitchen option

**WALK-IN PANTRY UPGRADE**  
+ stone bench + overhead cupboards + pocket door to laundry



 4	 3
 2	 2

LENGTH 24.80m  
WIDTH 11.25m

TOTAL FLOOR AREA  
**239.14m<sup>2</sup>**

MIN. FRONTAGE  
**12.5m**

BED 1	4.2 x 3.4
BED 2	3.0 x 3.0
BED 3	3.4 x 3.0
BED 4	3.1 x 2.9
ALFRESCO	3.6 x 3.1
ACTIVITY	3.0 x 3.0
MEDIA	3.6 x 3.4
MEALS	4.8 x 2.4
KITCHEN	4.1 x 3.1
LIVING	4.8 x 4.0
GARAGE	5.8 x 5.8

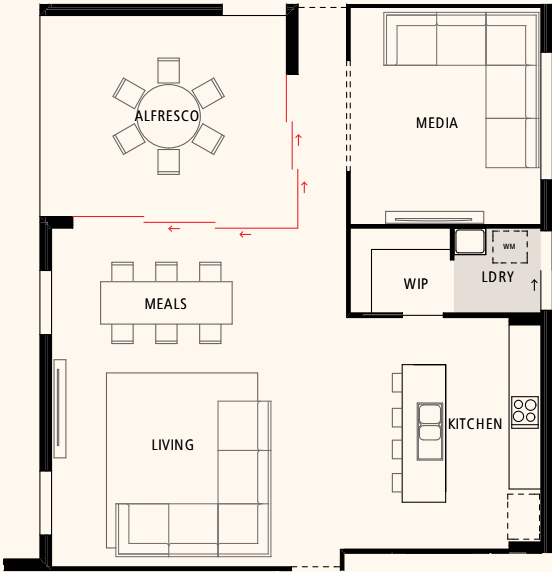
# Bondi

## 240

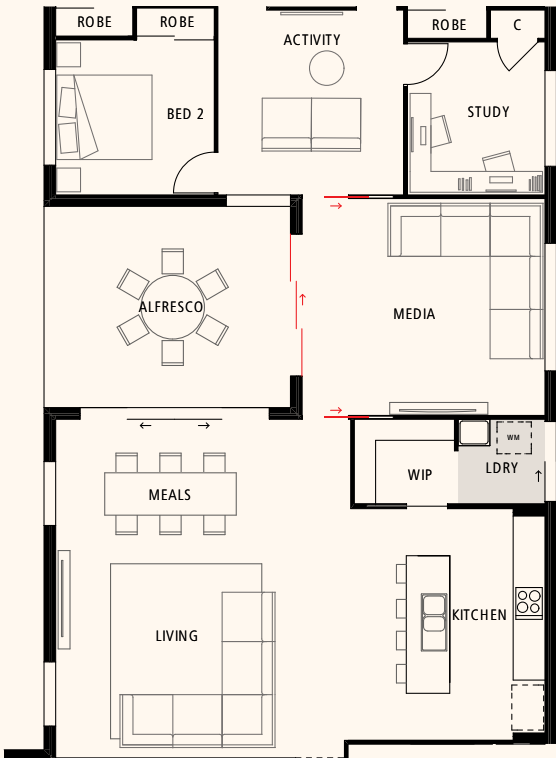
A centrally positioned alfresco makes this home a light-filled haven. It features a gourmet kitchen perfect for keen home cooks, and a handy walk-in pantry conveniently adjoins the laundry - who doesn't love a little multi-tasking? Enjoy movie nights in the media room, while the kids have their own activities zone that can be transformed into a rumpus, study or playroom. At the front of the home, the master bedroom features a walk-in robe and ensuite.

All plans are copyright, no part may be used, reproduced or copied by any means or in any form without the prior permission of the copyright owner. Plans are subject to change without notice. Dimensions may vary depending on façade style. Images and plans are not to scale. Furniture including desks and study nooks are illustrative only and are not included. Refer to working drawings for scaled floor plan. Please contact a New Home Consultant for further information.

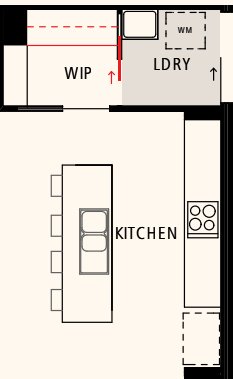




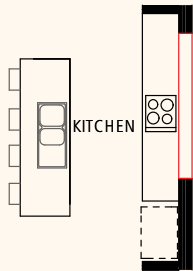
**POSTLESS STACKER DOORS**  
Add 4.0m and 2.7m postless stacker doors to the alfresco



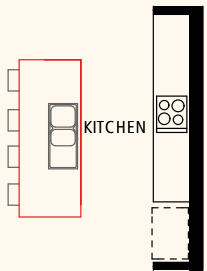
**ALTERNATE MEDIA ROOM**  
Remove the wall enclosing the media room + add a 2.7m stacker door to alfresco + add two 820mm cavity sliders



**WALK-IN PANTRY UPGRADE**  
+ stone bench  
+ overhead cupboards  
+ pocket door to laundry



**SPLASHBACK WINDOW**  
Add a 2400mm wide splashback window to the kitchen



**KITCHEN ISLAND UPGRADE**  
1200mm wide island bench option



	4		3
	2		2

LENGTH 25.00m  
WIDTH 11.25m

TOTAL FLOOR AREA  
**245.52m<sup>2</sup>**

MIN. FRONTAGE  
**12.5m**

BED 1	4.2 x 3.4
BED 2	3.0 x 2.9
BED 3	3.1 x 2.9
BED 4	3.1 x 2.9
ALFRESCO	4.6 x 3.8
STUDY	2.9 x 2.6
ACTIVITY	3.5 x 3.4
MEDIA	4.1 x 3.6
MEALS	4.5 x 2.4
KITCHEN	4.3 x 3.1
LIVING	4.5 x 3.9
GARAGE	5.8 x 5.8

# Bondi

## 245 V1

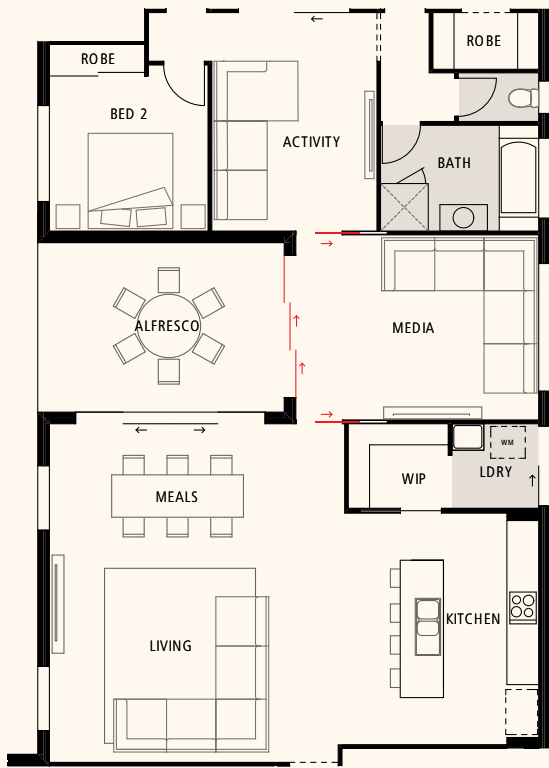
Ideal for families, this spacious home has everything you need and more! The living and dining area opens onto a central, private alfresco, just perfect for entertaining friends. The separate bedroom zone includes an activity area for the kids plus a private study, so everyone can enjoy their own space to work and relax. Get together for a family movie night in the media room, then retreat to your own master suite complete with walk-in robe and ensuite.

All plans are copyright, no part may be used, reproduced or copied by any means or in any form without the prior permission of the copyright owner. Plans are subject to change without notice. Dimensions may vary depending on façade style. Images and plans are not to scale. Furniture including desks and study nooks are illustrative only and are not included. Refer to working drawings for scaled floor plan. Please contact a New Home Consultant for further information.

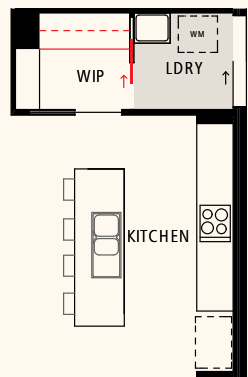




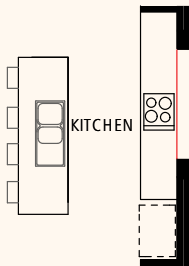
**POSTLESS STACKER DOORS**  
Add 4.0m and 2.7m postless stacker doors to the alfresco



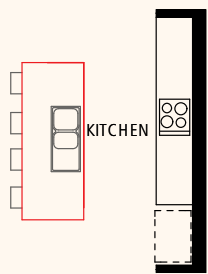
**ALTERNATE MEDIA ROOM**  
Remove the wall enclosing the media room  
+ add a 2.7m Stacker door to alfresco  
+ add two 820mm cavity sliders



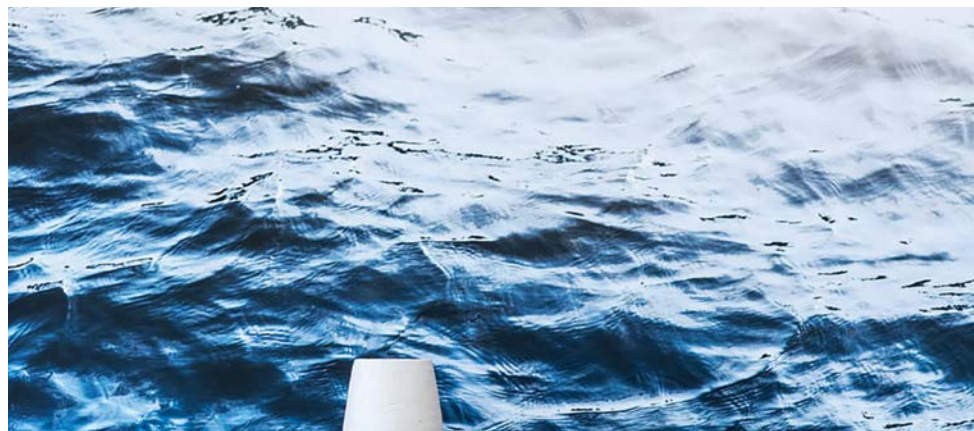
**WALK-IN PANTRY UPGRADE**  
+ stone bench  
+ overhead cupboards  
+ pocket door to laundry



**SPLASHBACK WINDOW**  
Add a 2400mm wide splashback window to the kitchen



**KITCHEN ISLAND UPGRADE**  
1200mm wide island bench option



4	3
2	2

LENGTH 25.00m  
WIDTH 11.25m  
TOTAL FLOOR AREA  
**245.56m<sup>2</sup>**  
MIN. FRONTAGE  
**12.5m**

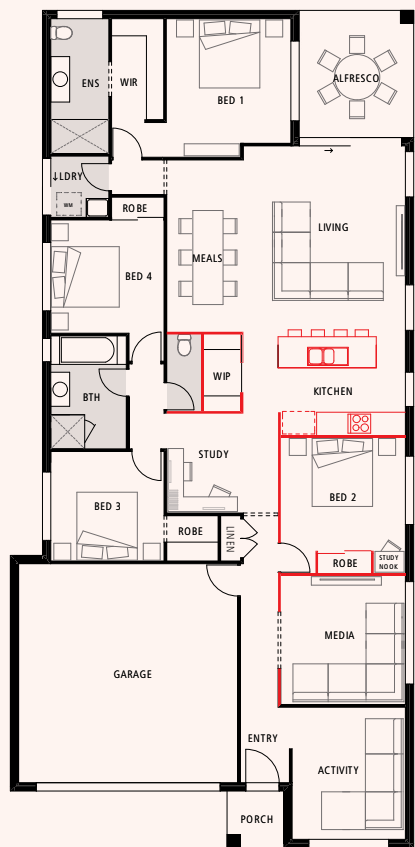
BED 1	4.2 x 3.4
BED 2	3.0 x 2.9
BED 3	3.0 x 2.9
BED 4	3.0 x 2.9
ALFRESCO	4.6 x 3.2
ACTIVITY	4.1 x 3.1
MEDIA	3.6 x 3.5
MEALS	4.6 x 2.4
KITCHEN	4.3 x 3.1
LIVING	4.5 x 4.0
GARAGE	5.8 x 5.8

*Bondi*  
**245 V2**

This light-filled home has been designed with our laid-back indoor/outdoor lifestyle in mind. The spacious living and dining opens onto a private alfresco, making entertaining easy. The kitchen has a walk-in pantry connected to the laundry, while the separate media room is perfect for movie night. The kids will love the bedroom zone, centred around an activity room with its own patio. Featuring a walk-in robe and ensuite, the master suite is a secluded sanctuary.

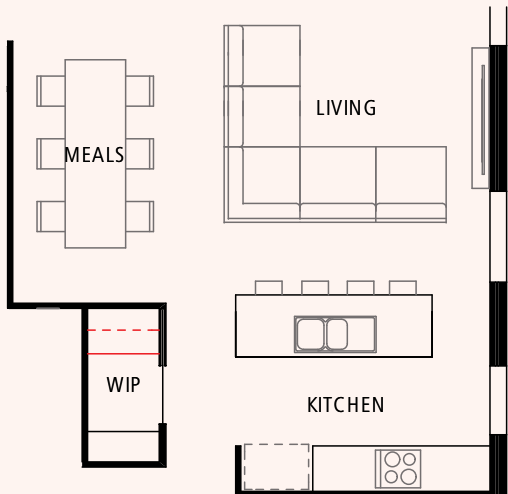
All plans are copyright, no part may be used, reproduced or copied by any means or in any form without the prior permission of the copyright owner. Plans are subject to change without notice. Dimensions may vary depending on façade style. Images and plans are not to scale. Furniture including desks and study nooks are illustrative only and are not included. Refer to working drawings for scaled floor plan. Please contact a New Home Consultant for further information.





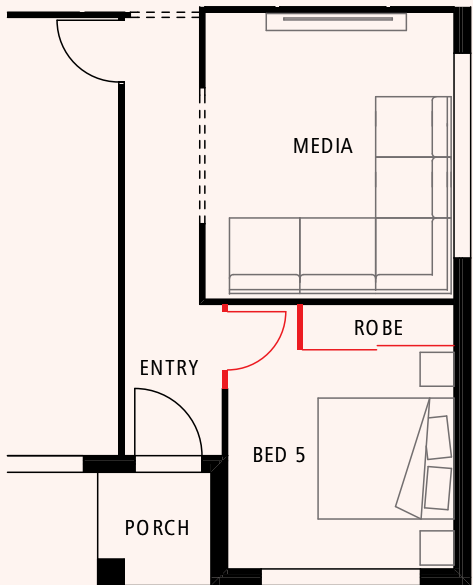
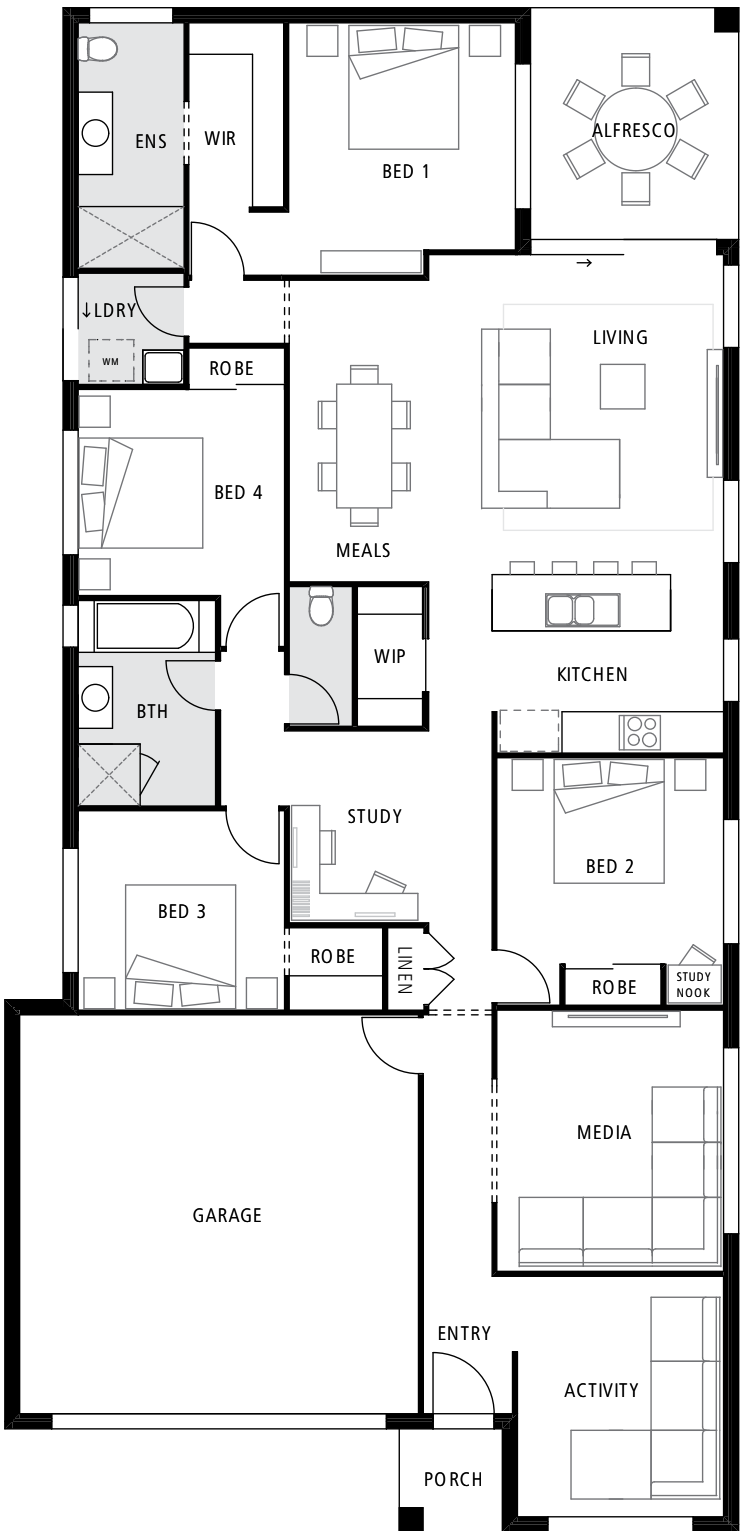
LARGER LIVING / SMALLER MEDIA OPTION

Increase the living area by 400mm by reducing the length of the media room



WALK-IN PANTRY UPGRADE

+ stone bench + overhead cupboards



BED 5 OPTION

Swap the activity for a fifth bedroom with robe



4	3
2	2

LENGTH 22.17m  
WIDTH 10.68m

TOTAL FLOOR AREA  
215.90m<sup>2</sup>

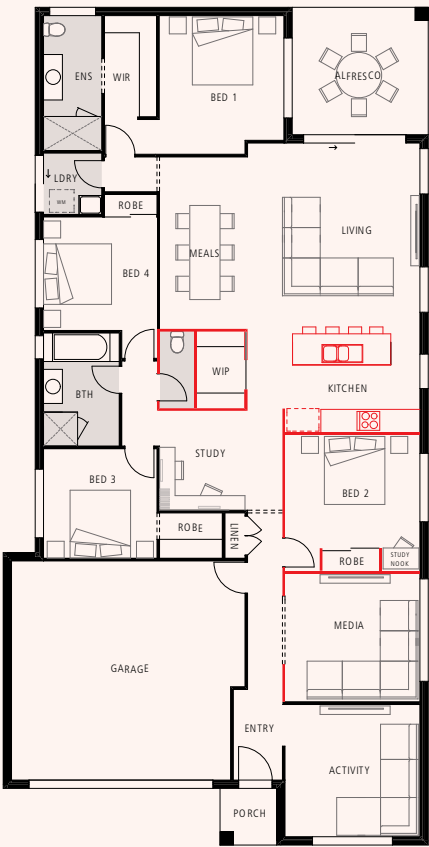
MIN. FRONTAGE  
12.5m

BED 1	3.5 x 3.3
BED 2	3.3 x 3.0
BED 3	3.0 x 2.9
BED 4	3.0 x 3.0
ALFRESCO	3.3 x 3.0
STUDY	2.7 x 2.0
ACTIVITY	3.5 x 3.0
MEDIA	3.8 x 3.3
MEALS	3.4 x 2.0
KITCHEN	3.3 x 2.7
LIVING	4.0 x 4.0
GARAGE	5.8 x 5.8

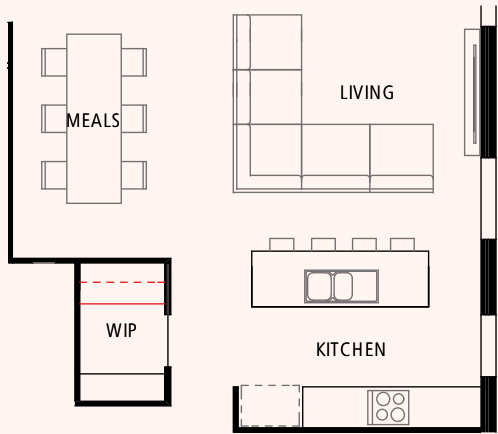
*Banksia*  
216

With three separate living areas, you'll love the space and freedom this beautiful home has to offer. The large living and dining area opening on to an alfresco makes entertaining family and friends easy, while the centrally located study creates the perfect home office. Complete with a media room and kids activity room, there's plenty of space for everyone to do their own thing or come together as a family. This stunning home is sure to impress!

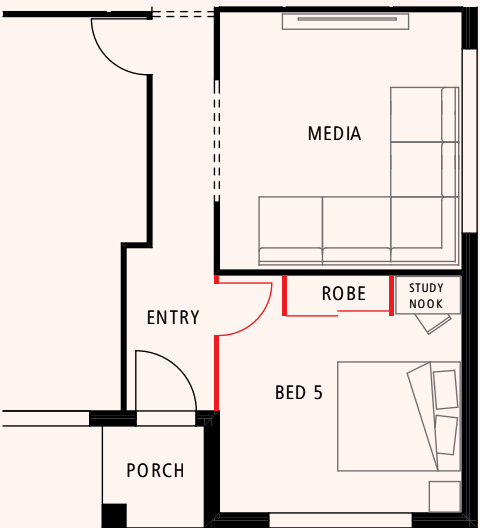
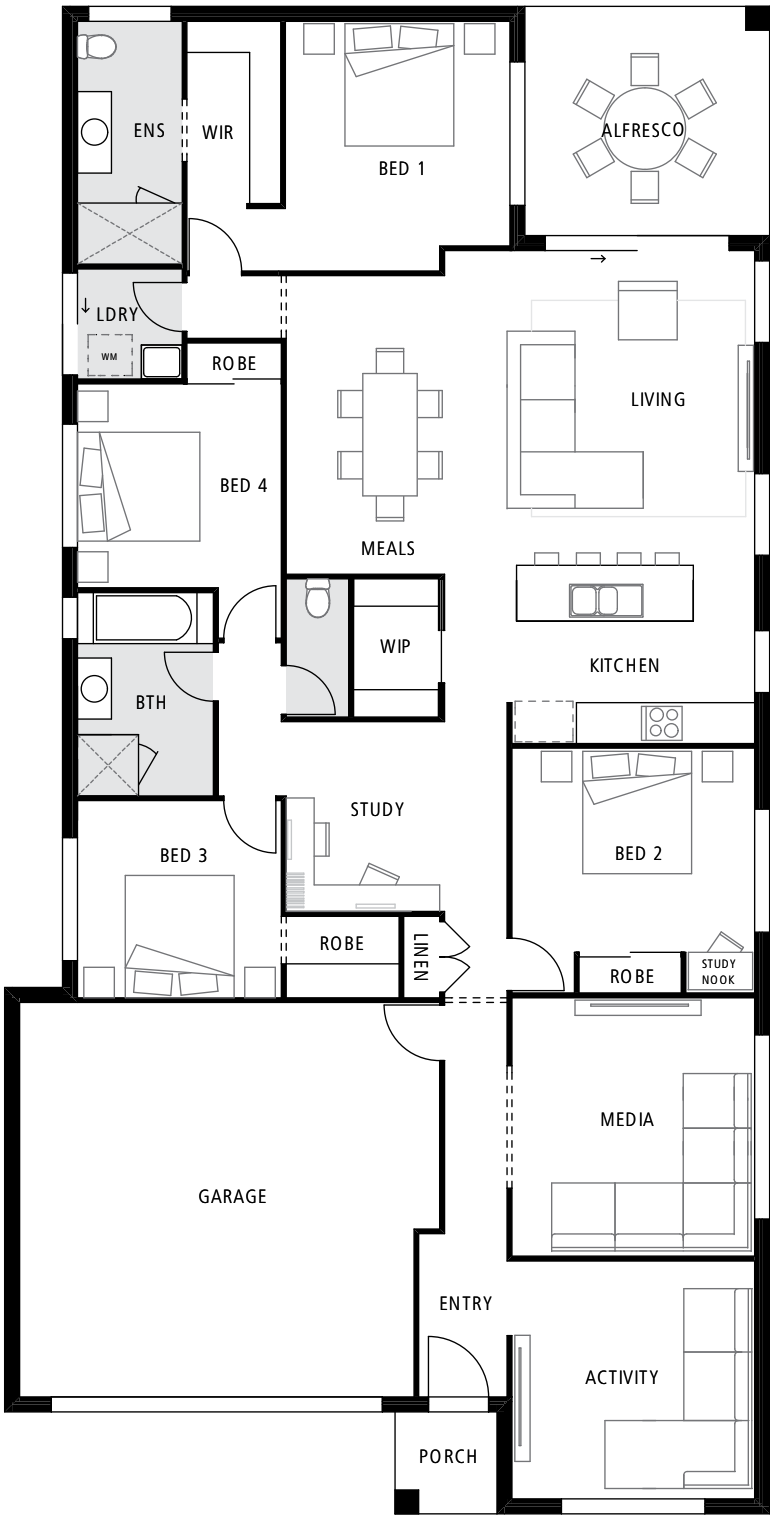




**LARGER LIVING / SMALLER MEDIA OPTION**  
Increase the living area by 400mm,  
reducing the length of the media room



**WALK-IN PANTRY UPGRADE**  
+ stone bench + overhead cupboards



**BED 5 OPTION**  
Swap the activity for a fifth bedroom with robe



 4	 3
 2	 2

LENGTH 22.17m  
WIDTH 11.25m

TOTAL FLOOR AREA  
**228.54m<sup>2</sup>**

MIN. FRONTAGE  
**12.5m**

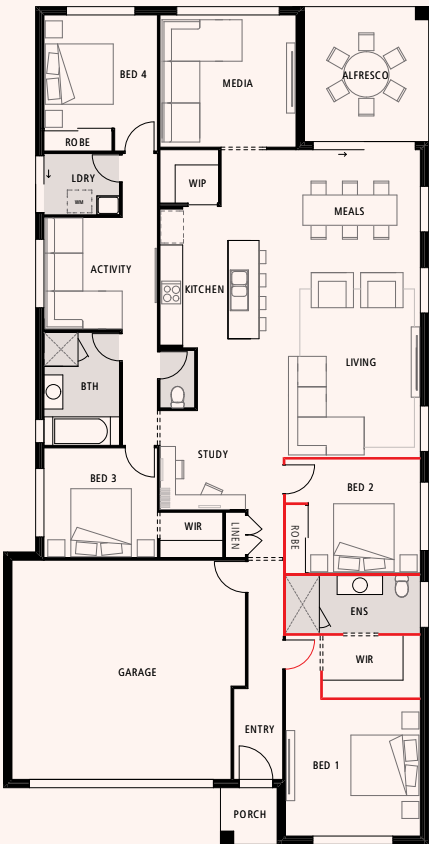
BED 1	3.5 x 3.3
BED 2	3.5 x 3.0
BED 3	3.0 x 2.9
BED 4	3.0 x 3.0
ALFRESCO	3.6 x 3.3
STUDY	2.7 x 2.3
ACTIVITY	3.5 x 3.5
MEDIA	3.8 x 3.8
MEALS	3.4 x 2.3
KITCHEN	3.5 x 2.3
LIVING	4.1 x 4.0
GARAGE	5.8 x 5.8

*Banksia*  
**229 V1**

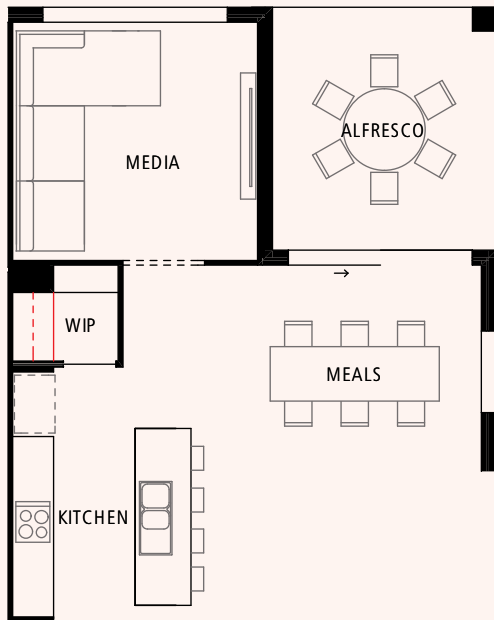
This beautiful, spacious home offers all the room a growing family needs to relax in style. A spacious living and dining, as well as separate media and activity rooms mean that no one has to compromise on space. With a large study in the heart of the home and a study nook in the second bedroom, this bright and airy home has it all. A generous stone island bench and large walk-in pantry in the open plan kitchen make this home a real family favourite!

All plans are copyright, no part may be used, reproduced or copied by any means or in any form without the prior permission of the copyright owner. Plans are subject to change without notice. Dimensions may vary depending on façade style. Images and plans are not to scale. Furniture including desks and study nooks are illustrative only and are not included. Refer to working drawings for scaled floor plan. Please contact a New Home Consultant for further information.

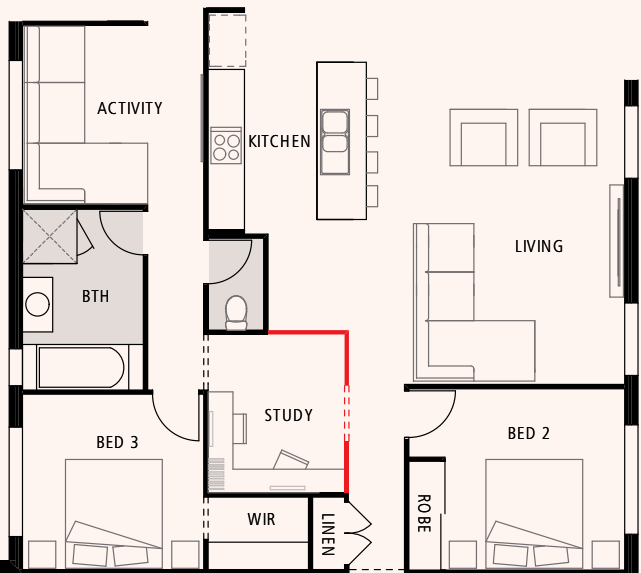




**LARGER LIVING / SMALLER BED 1 OPTION**  
Increase your living area by 400mm by reducing the length of bed 1



**WALK-IN PANTRY UPGRADE**  
+ stone bench + overhead cupboards



**ENCLOSED STUDY**



 4	 3
 2	 2

LENGTH 22.17m  
WIDTH 11.25m  
  
TOTAL FLOOR AREA  
**228.54m<sup>2</sup>**  
  
MIN. FRONTAGE  
**12.5m**

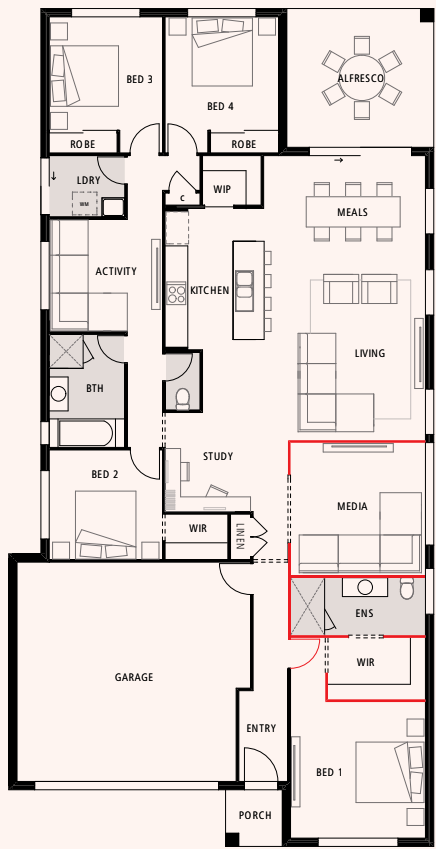
BED 1	4.0 x 3.5
BED 2	3.0 x 2.9
BED 3	3.0 x 2.9
BED 4	3.0 x 3.0
ALFRESCO	3.5 x 3.3
STUDY	2.6 x 2.3
ACTIVITY	3.0 x 2.9
MEDIA	3.6 x 3.5
MEALS	3.7 x 2.7
KITCHEN	2.7 x 2.4
LIVING	5.0 x 3.6
GARAGE	5.8 x 5.8

*Banksia*  
**229 V2**

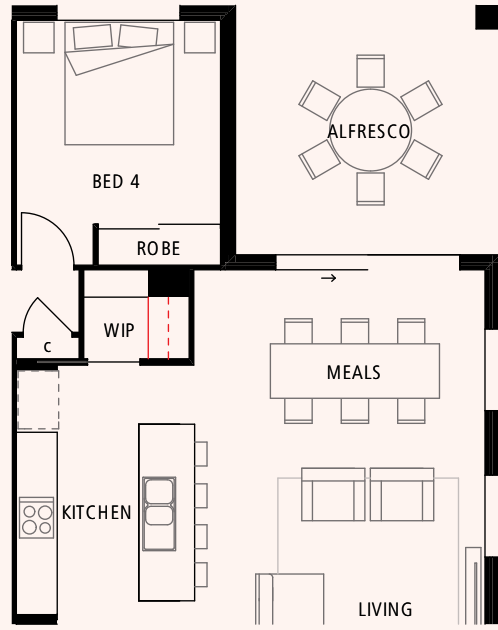
As soon as you walk through the door, you'll be impressed by the overwhelming feeling of space in this gorgeous family home. The generous living and dining area opens onto the alfresco, while the gourmet kitchen features a large stone island bench and walk-in pantry. There's also a separate media room and versatile activity room. The large, open study area is the perfect spot for your laptop or for the kids to do their homework, while the private master suite comes complete with a walk-in robe and ensuite with oversized shower.

All plans are copyright, no part may be used, reproduced or copied by any means or in any form without the prior permission of the copyright owner. Plans are subject to change without notice. Dimensions may vary depending on façade style. Images and plans are not to scale. Furniture including desks and study nooks are illustrative only and are not included. Refer to working drawings for scaled floor plan. Please contact a New Home Consultant for further information.

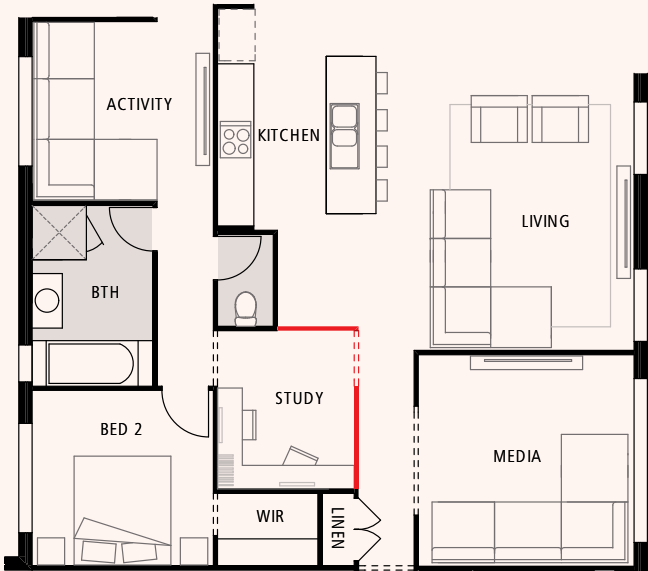




**LARGER LIVING / SMALLER BED 1 OPTION**  
Increase the living area by 400mm  
- reducing the length of bed 1



**WALK-IN PANTRY UPGRADE**  
+ stone bench + overhead cupboards



**ENCLOSED STUDY**



 4	 3
 2	 2

LENGTH 22.17m  
WIDTH 11.25m  
  
TOTAL FLOOR AREA  
**228.54m<sup>2</sup>**  
  
MIN. FRONTAGE  
**12.5m**

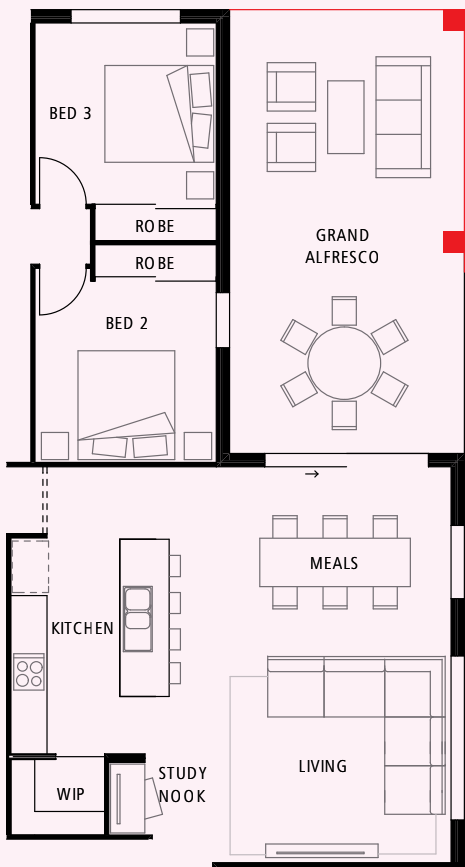
BED 1	4.0 x 3.5
BED 2	3.0 x 2.9
BED 3	3.0 x 2.9
BED 4	3.0 x 3.0
ALFRESCO	3.8 x 3.6
STUDY	2.6 x 2.3
ACTIVITY	3.0 x 2.9
MEDIA	3.55 x 3.5
MEALS	4.2 x 2.6
KITCHEN	2.7 x 2.4
LIVING	4.5 x 3.6
GARAGE	5.8 x 5.8

*Banksia*  
**229 V3**

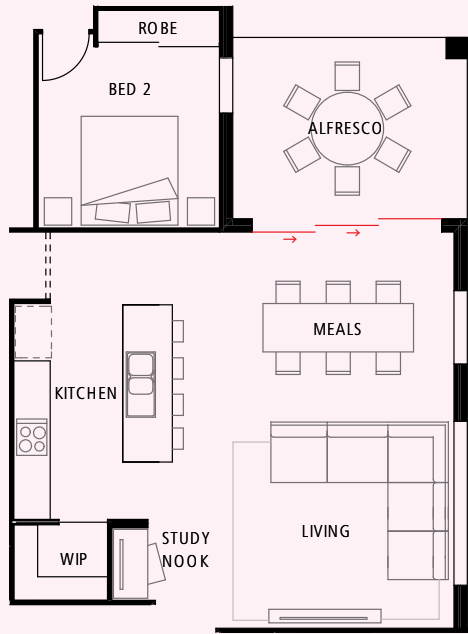
Spacious living is right at the heart of this stunning home. The open plan living is filled with natural light and spills out to a large alfresco, just perfect for entertaining. The central kitchen features a walk-in pantry and a large island bench. With a separate media room for movie buffs and a versatile activity room to keep the kids happy, there's a lot to love about this warm family home. Retreat to your master suite with a walk-in robe and ensuite.

All plans are copyright, no part may be used, reproduced or copied by any means or in any form without the prior permission of the copyright owner. Plans are subject to change without notice. Dimensions may vary depending on façade style. Images and plans are not to scale. Furniture including desks and study nooks are illustrative only and are not included. Refer to working drawings for scaled floor plan. Please contact a New Home Consultant for further information.

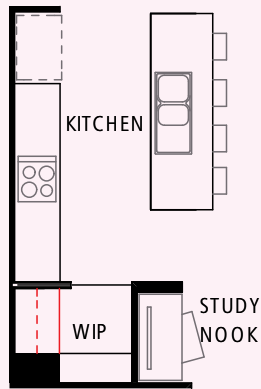




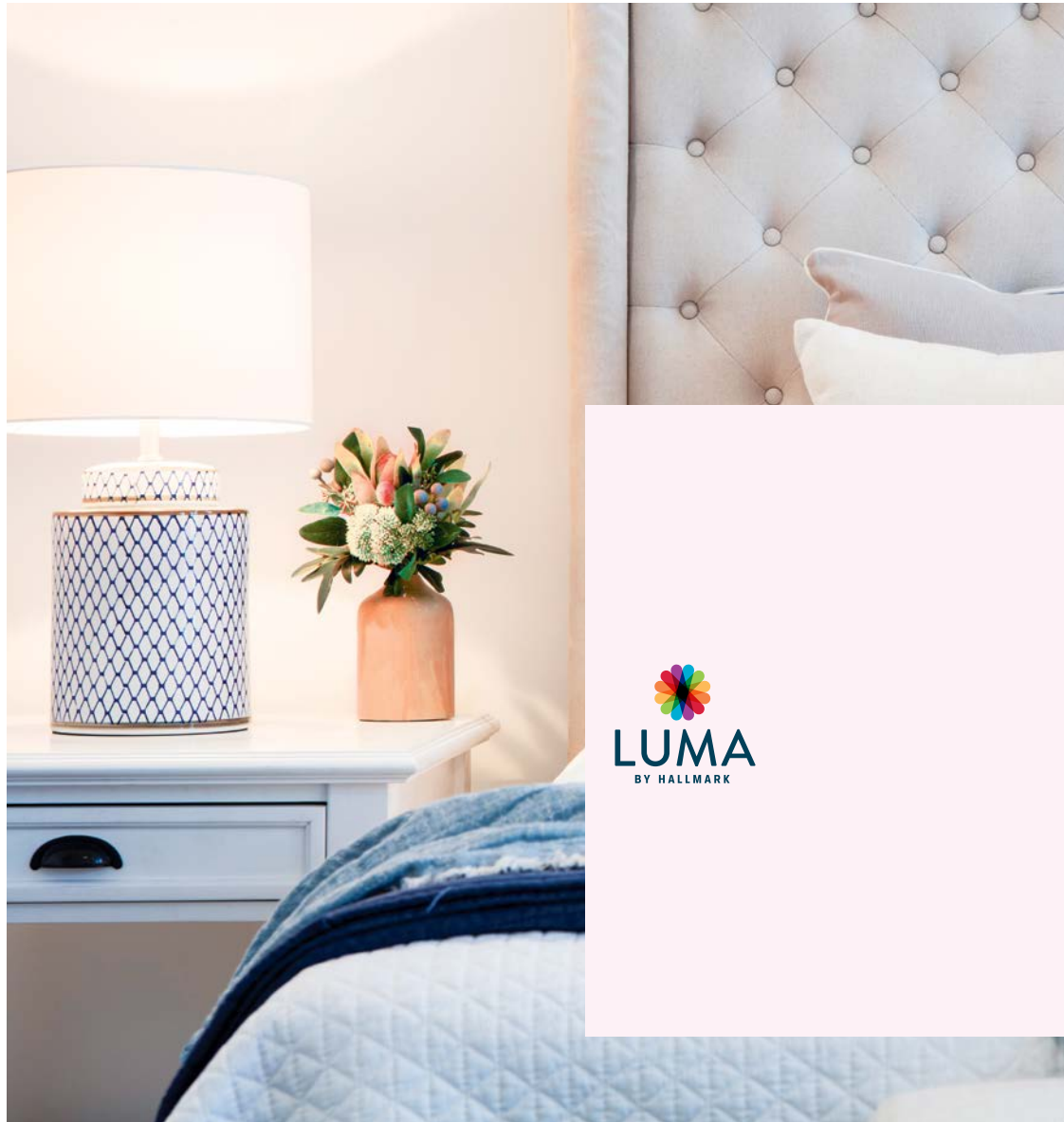
**GRAND ALFRESCO**  
Increase the alfresco by 16.8m<sup>2</sup>



**STACKER DOOR UPGRADE**  
3.1m stacker door option



**WALK-IN PANTRY UPGRADE**  
+ stone bench + overhead cupboards



 4	 2
 2	 2

LENGTH 21.24m  
WIDTH 11.25m

TOTAL FLOOR AREA  
**201.93m<sup>2</sup>**

MIN. FRONTAGE  
**12.5m**

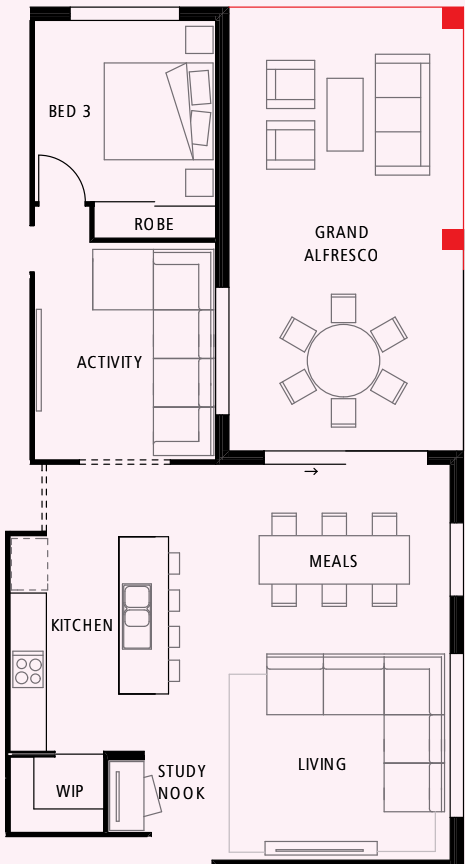
BED 1	3.8 x 3.5
BED 2	3.0 x 3.0
BED 3	3.0 x 3.0
BED 4	3.0 x 3.0
ALFRESCO	3.1 x 3.0
ACTIVITY	3.6 x 3.0
MEALS	4.0 x 2.5
KITCHEN	3.6 x 2.4
LIVING	4.0 x 4.0
GARAGE	5.8 x 5.8

*Cove*  
**202 V1**

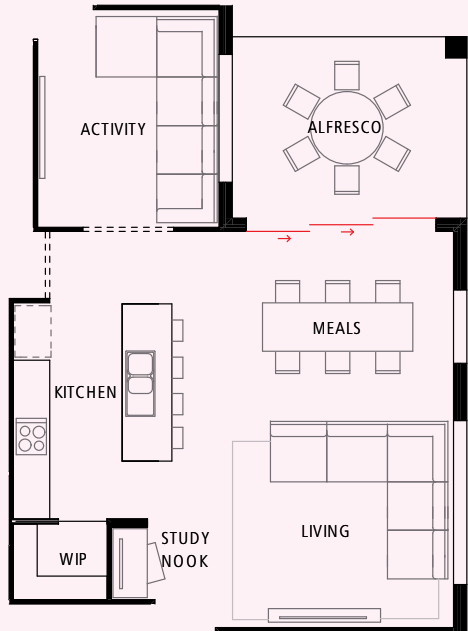
Featuring a luxuriously sized walk-in robe and a beautiful ensuite, the private master bedroom in this home is made for relaxing at the end of the day. The gourmet kitchen with walk-in pantry and handy study nook adjoins the open plan living and dining area, which spills out onto the alfresco. There's a cleverly positioned activity room in the kids' bedroom zone, plus an oversized laundry with plenty of linen storage - perfect for the busy family.

All plans are copyright, no part may be used, reproduced or copied by any means or in any form without the prior permission of the copyright owner. Plans are subject to change without notice. Dimensions may vary depending on façade style. Images and plans are not to scale. Furniture including desks and study nooks are illustrative only and are not included. Refer to working drawings for scaled floor plan. Please contact a New Home Consultant for further information.

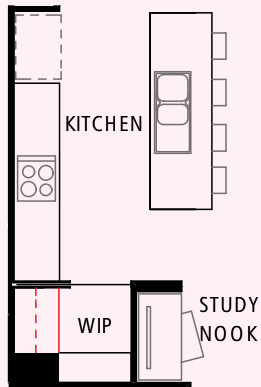
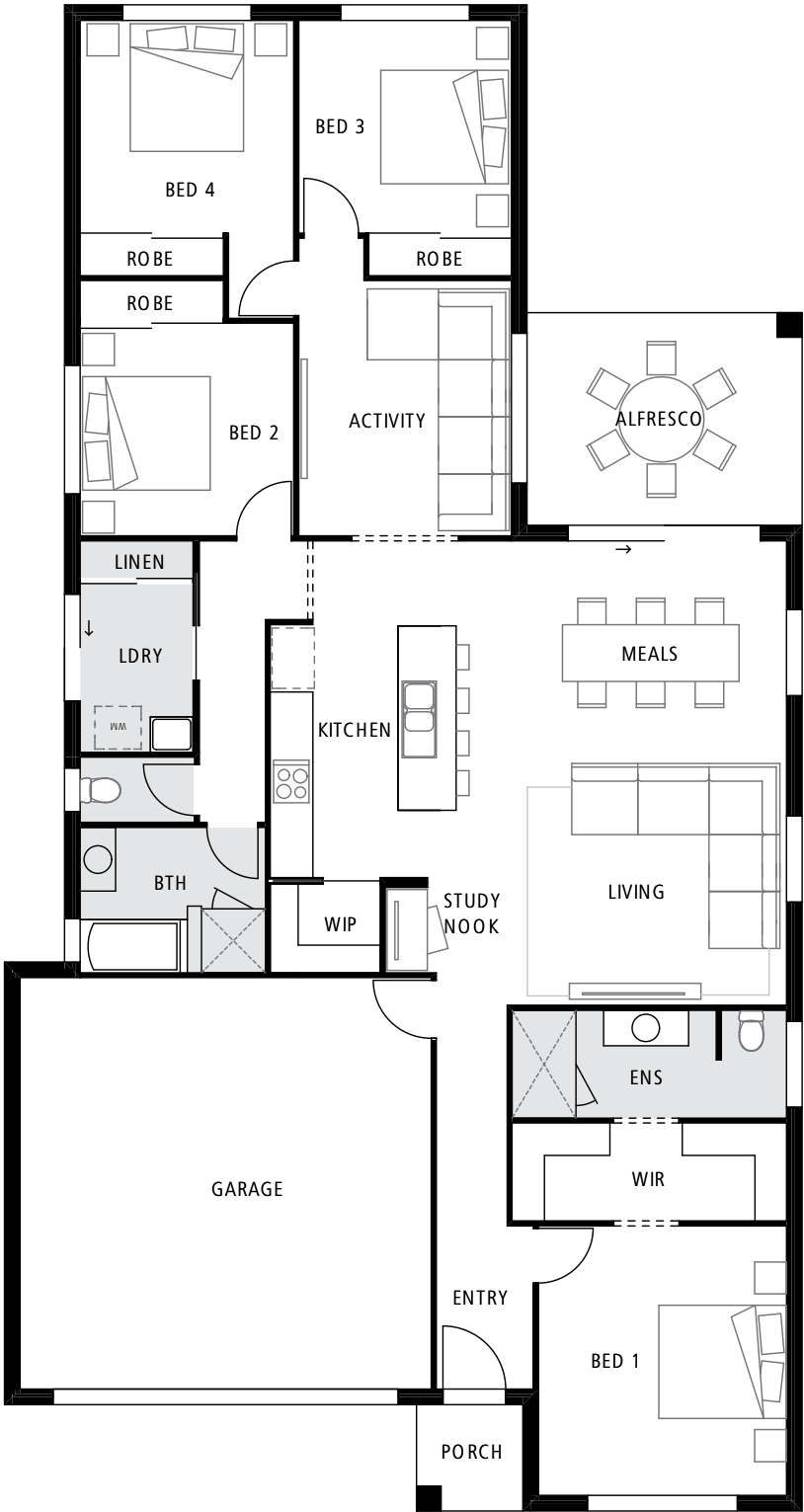




**GRAND ALFRESCO**  
Increase the alfresco by 16.8m<sup>2</sup>



**STACKER DOOR UPGRADE**  
3.1m stacker door upgrade



**WALK-IN PANTRY UPGRADE**  
+ stone bench + overhead cupboards



 4	 2
 2	 2

LENGTH 21.24m  
WIDTH 11.25m

TOTAL FLOOR AREA  
**201.93m<sup>2</sup>**

MIN. FRONTAGE  
**12.5m**

BED 1	3.8 x 3.5
BED 2	3.0 x 3.0
BED 3	3.0 x 3.0
BED 4	3.0 x 3.0
ALFRESCO	3.1 x 3.0
ACTIVITY	3.6 x 3.0
MEALS	4.0 x 2.5
KITCHEN	3.6 x 2.4
LIVING	4.0 x 4.0
GARAGE	5.8 x 5.8

*Cove*  
**202 V2**

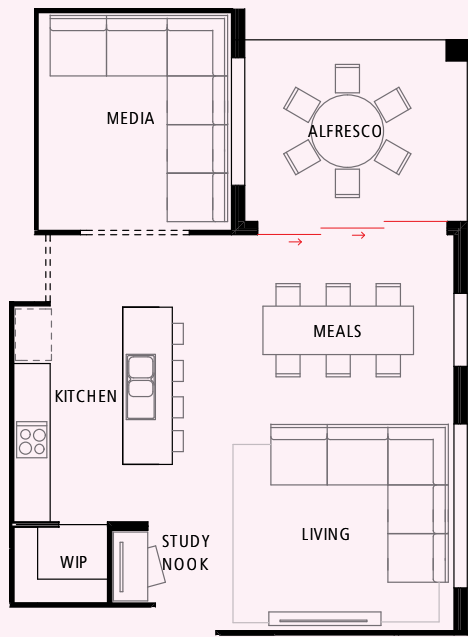
This welcoming home is an entertainer's dream with spacious, open plan living and a gorgeous kitchen at its very heart. The dining and living areas flow seamlessly onto the alfresco, with the option to expand to a grand alfresco, adding a huge 16.8m<sup>2</sup> of extra living space! There's also a versatile activity room just off the kitchen, plus a huge laundry. At the end of the day, retreat to the master bedroom with a large walk-in robe and ensuite.

All plans are copyright, no part may be used, reproduced or copied by any means or in any form without the prior permission of the copyright owner. Plans are subject to change without notice. Dimensions may vary depending on façade style. Images and plans are not to scale. Furniture including desks and study nooks are illustrative only and are not included. Refer to working drawings for scaled floor plan. Please contact a New Home Consultant for further information.

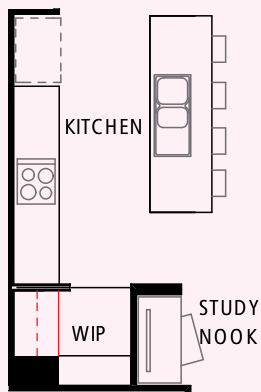
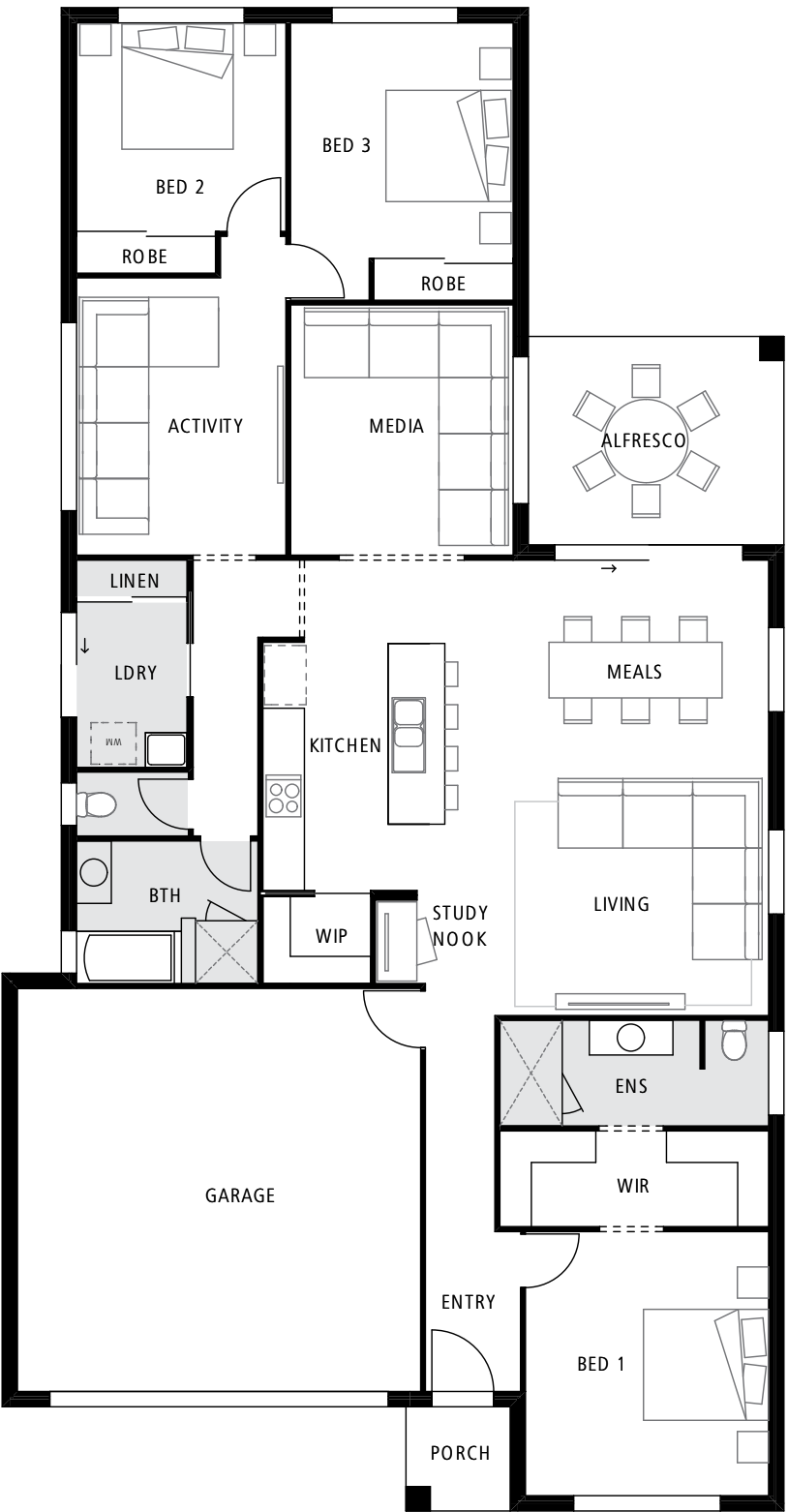




**GRAND ALFRESCO**  
Increase the alfresco by 17.41m<sup>2</sup>



**STACKER DOOR UPGRADE**  
3.1m stacker door upgrade



**WALK-IN PANTRY UPGRADE**  
+ stone bench + overhead cupboards



3 3  
2 2

LENGTH 21.63m  
WIDTH 11.25m  
TOTAL FLOOR AREA  
**205.41m<sup>2</sup>**  
MIN. FRONTAGE  
**12.5m**

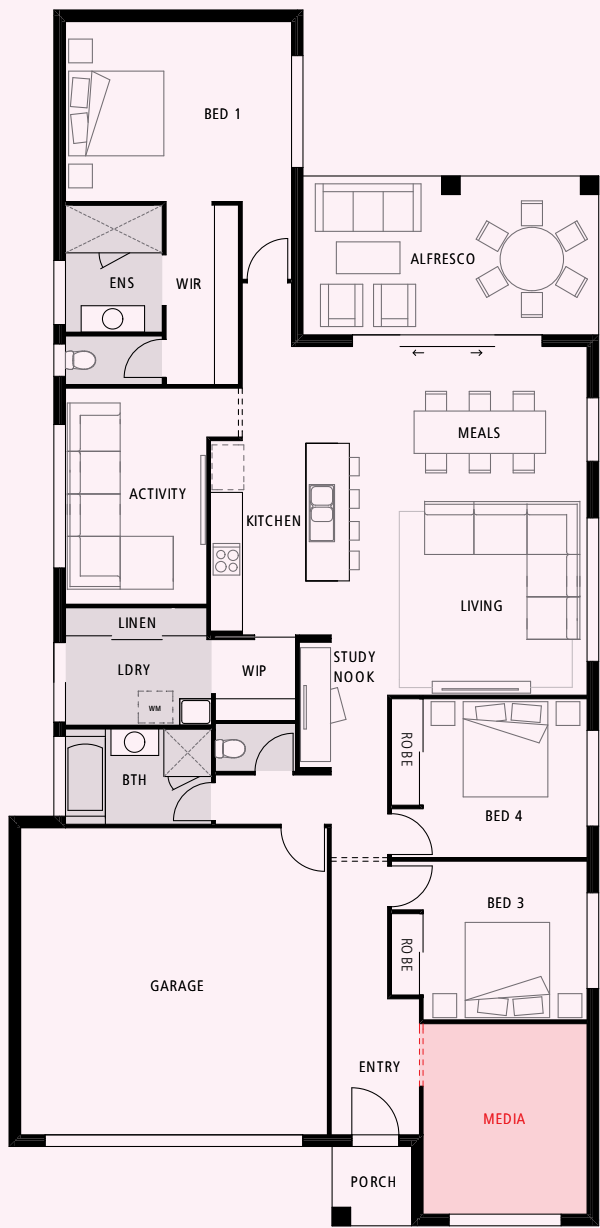
BED 1	3.8 x 3.5
BED 2	3.0 x 3.0
BED 3	3.3 x 3.2
ALFRESCO	3.6 x 3.0
ACTIVITY	3.9 x 3.0
MEDIA	3.6 x 3.2
MEALS	4.0 x 2.5
KITCHEN	3.6 x 2.4
LIVING	4.0 x 4.0
GARAGE	5.8 x 5.8

*Cove*  
**206**

You'll love the versatile space this home offers. With a living, media and activity room, your family has plenty of space to come together or do their own thing. The stylish kitchen with walk-in pantry and large stone island bench flows through to the living and dining, which seamlessly spills out to the alfresco. This design also features an oversized laundry with built-in linen cupboard, while the large master suite boasts a double walk-in robe and ensuite.

All plans are copyright, no part may be used, reproduced or copied by any means or in any form without the prior permission of the copyright owner. Plans are subject to change without notice. Dimensions may vary depending on façade style. Images and plans are not to scale. Furniture including desks and study nooks are illustrative only and are not included. Refer to working drawings for scaled floor plan. Please contact a New Home Consultant for further information.

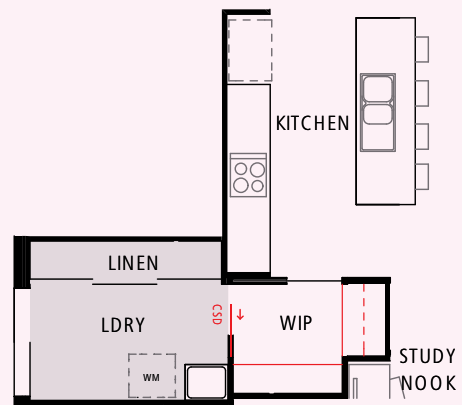
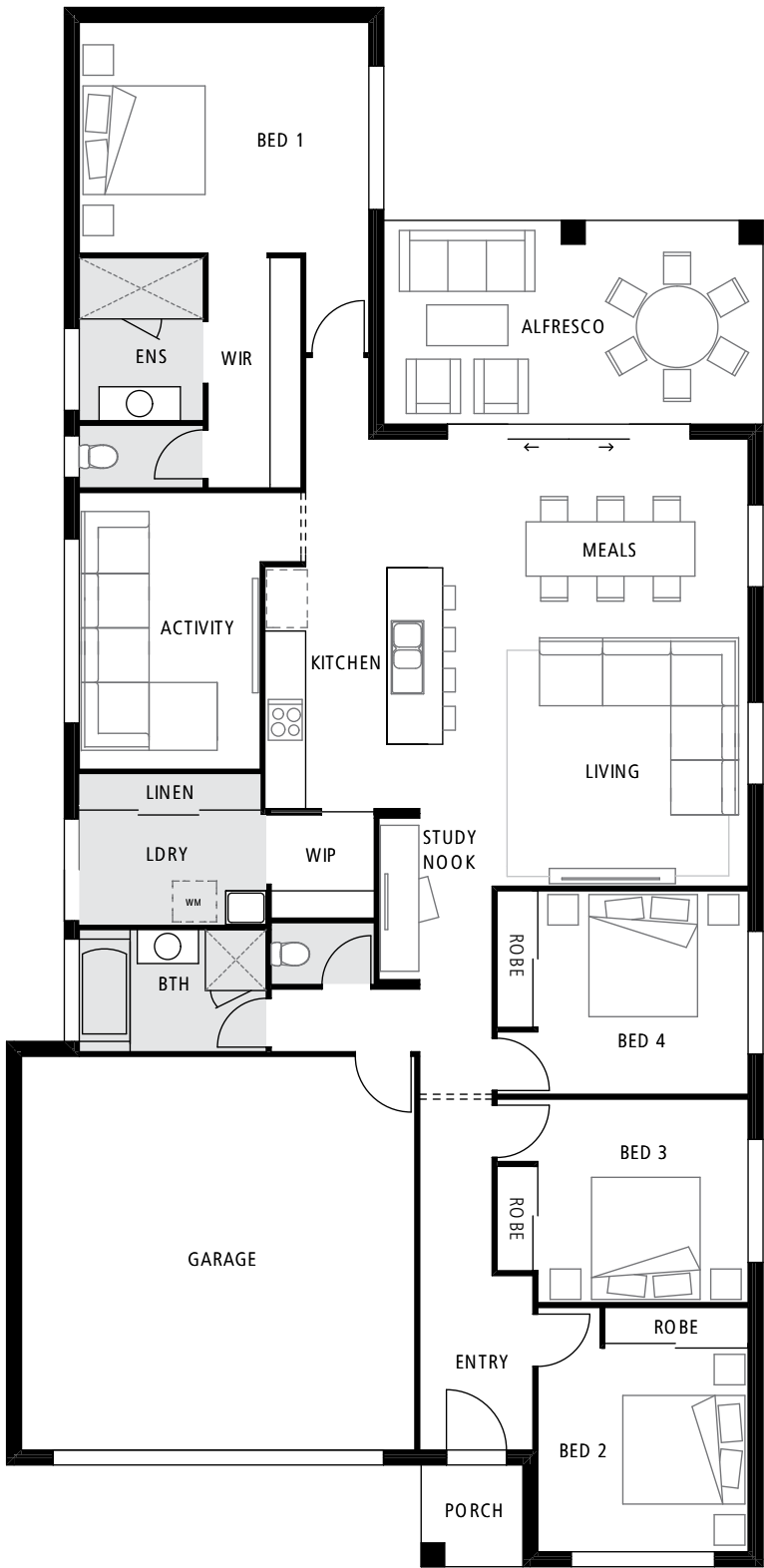




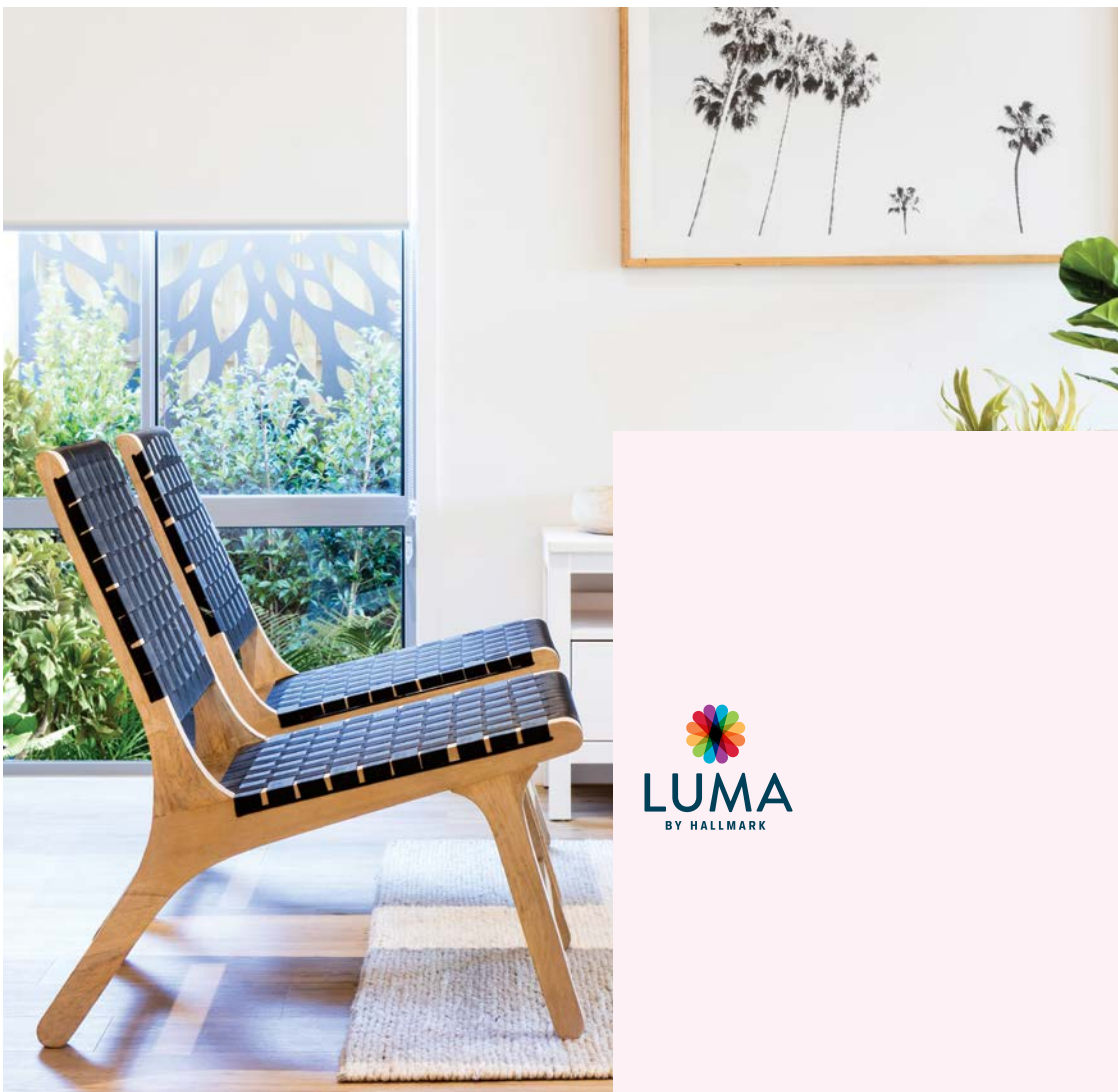
**MEDIA ROOM OPTION**  
Replace bed 2 with a media room (3.6m x 3.1m)



**GRAND ALFRESCO**  
Increase the alfresco by 17.55m<sup>2</sup>



**WALK-IN PANTRY UPGRADE**  
+ 1m stone bench + overhead cupboards  
+ cavity slider door to laundry + open shelving to pantry



 4	 2
 2	 2

LENGTH 22.98m  
WIDTH 11.15m

TOTAL FLOOR AREA  
**216.56m<sup>2</sup>**

MIN. FRONTAGE  
**12.5m**

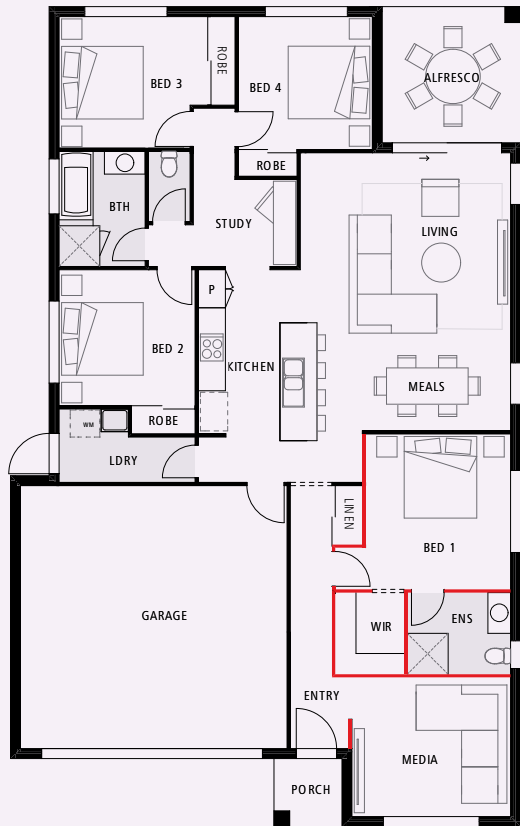
BED 1	4.2 x 3.4
BED 2	3.1 x 3.0
BED 3	3.1 x 3.0
BED 4	3.1 x 3.0
ALFRESCO	5.5 x 3.0
ACTIVITY	4.0 x 2.6
MEALS	4.0 x 2.6
KITCHEN	3.6 x 2.4
LIVING	4.0 x 4.0
GARAGE	5.8 x 5.8

*Cove*  
**217**

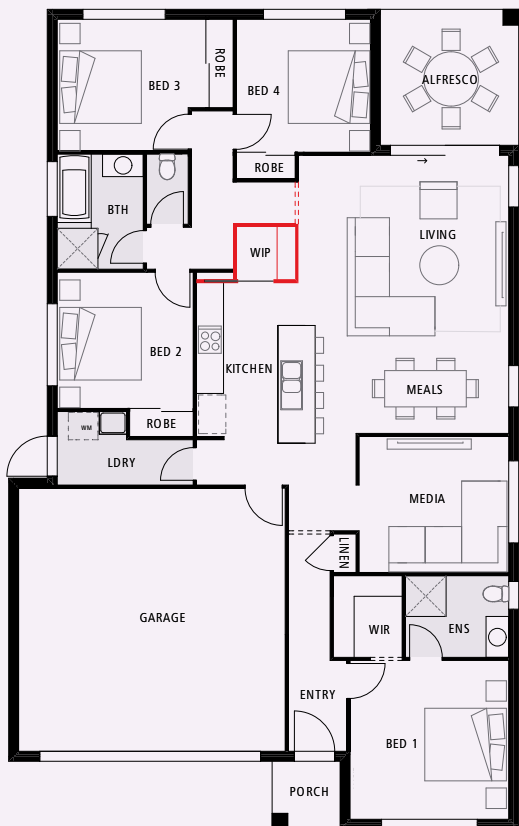
With a massive alfresco flowing out from the open plan living area, this home is just made for lazy days spent with friends and family. The gourmet kitchen has a walk-in pantry connected to an oversized laundry. There's also a handy study nook near the kitchen, so it's easy to keep an eye on the kids when they do their homework. The separate activity room is the perfect spot to enjoy a movie, while the private master suite features an ensuite, separate toilet and huge walk-in robe.

All plans are copyright, no part may be used, reproduced or copied by any means or in any form without the prior permission of the copyright owner. Plans are subject to change without notice. Dimensions may vary depending on façade style. Images and plans are not to scale. Furniture including desks and study nooks are illustrative only and are not included. Refer to working drawings for scaled floor plan. Please contact a New Home Consultant for further information.

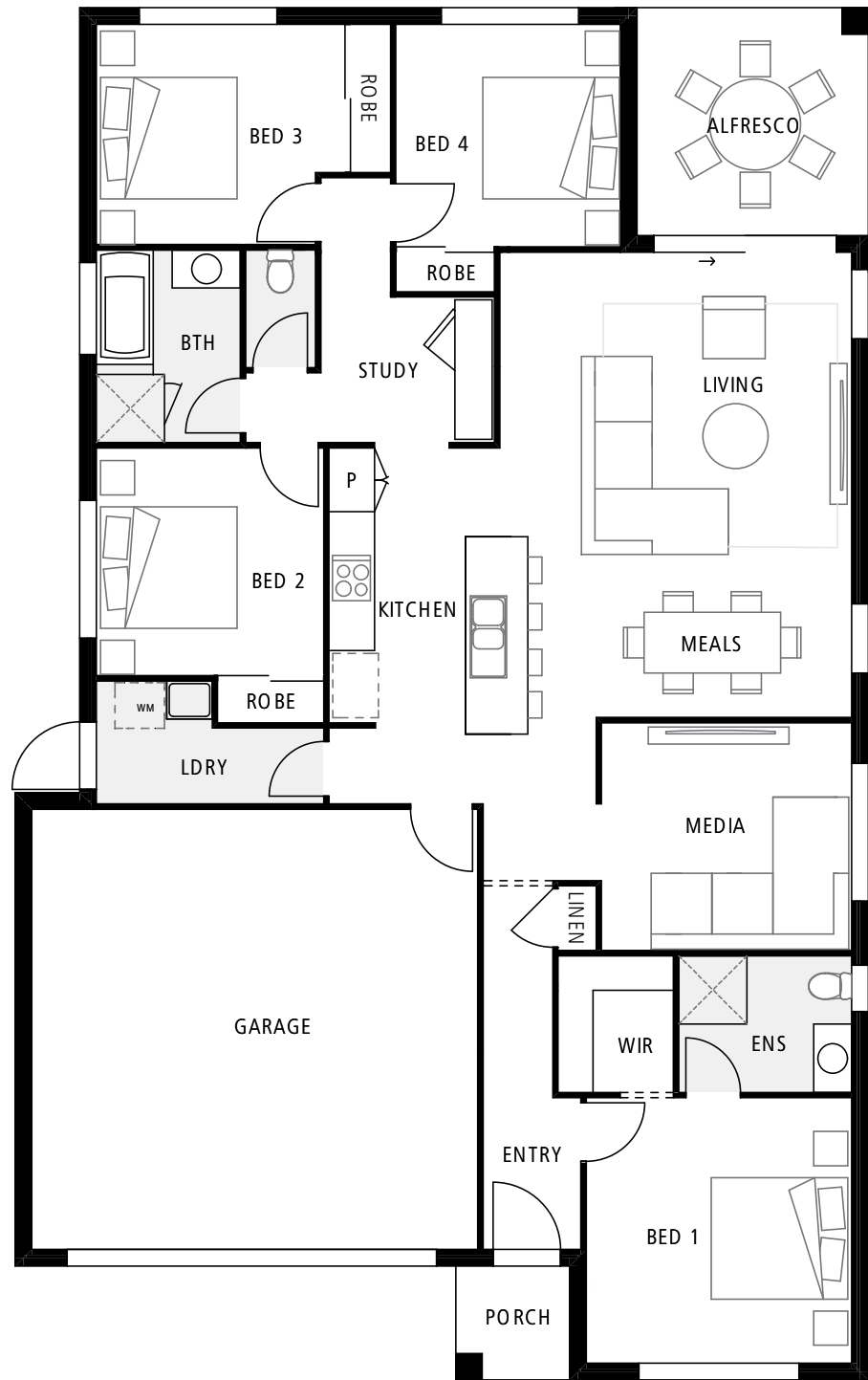




**FLIP BED 1 & MEDIA**  
+ 650mm nib wall to entry + 1300mm linen



**WALK-IN PANTRY & BENCHTOP UPGRADE**  
Remove cupboard pantry for 840mm of extra bench space + 720mm cavity slider + hamper



	4		2
	2		2

LENGTH 18.08m  
WIDTH 11.25m

TOTAL FLOOR AREA  
**185.90m<sup>2</sup>**

MIN. FRONTAGE  
**12.5m**

BED 1	3.5 x 3.5
BED 2	3.2 x 2.9
BED 3	3.0 x 2.9
BED 4	2.9 x 2.9
ALFRESCO	3.0 x 3.0
STUDY	2.2 x 1.9
MEDIA	3.3 x 3.0
MEALS	3.3 x 2.0
KITCHEN	4.6 x 2.8
LIVING	4.6 x 4.1
GARAGE	5.8 x 5.8

*Manly*  
**186**

The thoughtfully designed layout of the Manly 186 makes living a breeze. Sure to become the heart of your beautiful new home, you'll love the practical, open plan kitchen layout, complete with generous stone island bench. There's also a cleverly positioned study that's ideal for a home office or homework space for the kids. Sit back and watch your favourite Netflix series in the media room, or relax in the privacy of your master bedroom with separate walk-in robe and ensuite.

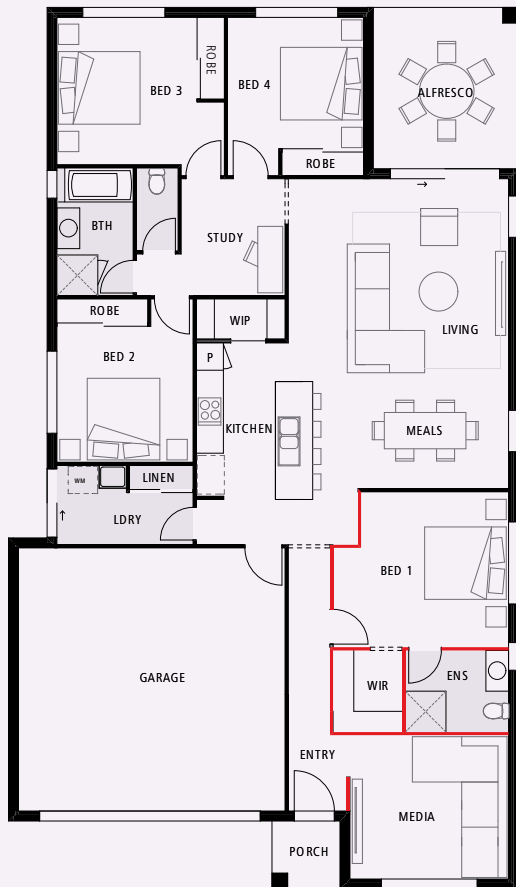
All plans are copyright, no part may be used, reproduced or copied by any means or in any form without the prior permission of the copyright owner. Plans are subject to change without notice. Dimensions may vary depending on façade style. Images and plans are not to scale. Furniture including desks and study nooks are illustrative only and are not included. Refer to working drawings for scaled floor plan. Please contact a New Home Consultant for further information.





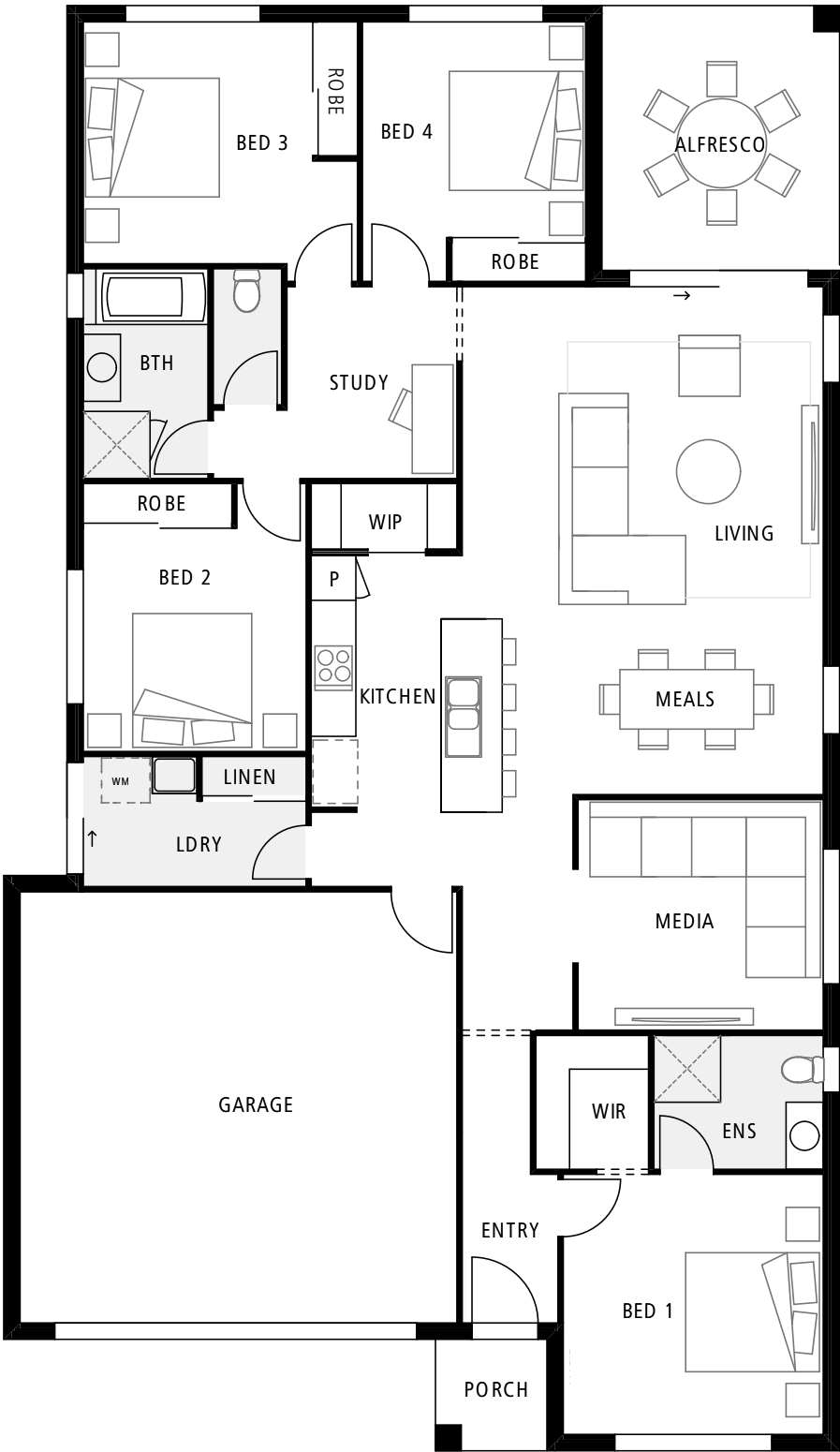
WALK-IN PANTRY UPGRADE

- + extend benchtop by 600mm in lieu of pantry cupboard
- + WIP extension in lieu of study nook
- + 880mm stone bench to pantry



MIRROR REVERSE BED 1 & MEDIA

- + 750mm nib to media



 4	 2
 2	 2

LENGTH 19.44m  
WIDTH 11.25m

TOTAL FLOOR AREA  
200.04m<sup>2</sup>

MIN. FRONTAGE  
12.5m

BED 1	3.5 x 3.3
BED 2	3.0 x 3.0
BED 3	3.2 x 3.0
BED 4	3.0 x 2.9
ALFRESCO	3.5 x 3.2
STUDY	2.5 x 2.2
MEDIA	3.3 x 3.1
MEALS	3.4 x 2.2
KITCHEN	4.3 x 2.8
LIVING	4.6 x 4.2
GARAGE	5.8 x 5.8

Manly  
200

The open plan living areas and alfresco create a central hub that adds to the spacious feel of this home. Designed with convenience in mind, it's just a few steps from the garage to the large kitchen island bench and walk-in pantry – perfect for unpacking the groceries. There's also a separate media room where the family can enjoy movie night, plus a handy study area for the kids to share. Need to get away from it all? The master suite offers a secluded sanctuary at the front of the home.

All plans are copyright, no part may be used, reproduced or copied by any means or in any form without the prior permission of the copyright owner. Plans are subject to change without notice. Dimensions may vary depending on façade style. Images and plans are not to scale. Furniture including desks and study nooks are illustrative only and are not included. Refer to working drawings for scaled floor plan. Please contact a New Home Consultant for further information.



# LUMA

## facades

### FOR 12.5 METRE LOT FRONTAGE

Our gorgeous range of Luma façades has been designed to complement your choice of floor plan perfectly. Inspired by the latest trends in contemporary architecture, you can mix and match from eight luxurious looks to create your ultimate dream home.



HAMPTONS FAÇADE



EXECUTIVE FAÇADE



URBAN FAÇADE



MODERN FAÇADE



METRO FAÇADE



SOUTHAMPTON FAÇADE



CLASSIC FAÇADE



CLASSIC + FAÇADE





## STAY *connected*

### FOLLOW US

Keep up with our latest news on Facebook and Instagram.



### HAPPY HALLMARK CLIENTS

Nothing makes us happier than getting great feedback!



*"Home Sweet Home! As first time builders we couldn't have asked for a more positive experience from start to finish. The quality was top notch."* BETH



*"Absolutely stoked. We are very happy with our build. Every time someone new comes over, they are in awe. From the beginning to the end, the service was exceptional."* ANDRE AND JONATHON



*"We recently completed our 5th build with Hallmark Homes (over a 15 year period). Their quality and professionalism just keep getting better."* KERRIE



*"We were so impressed with Hallmark Homes, their costing, and the quality of workmanship we decided to build with them again."* JEN AND ALEX

### GET IN TOUCH

hallmarkhomes.com.au  
1300 326 515

Photography, computer generated images and floorplans are for illustrative purposes only and should be used as a guide only. Computer generated images and floorplans are not to scale and may vary slightly depending on the selected floorplan. Photography is for illustrative purposes only and may feature non-standard items that are not included in the Luma Inclusions Range. Decorative items such as furniture, homewares and some appliances are not included. Pricing, materials, suppliers and specifications may be subject to change without notice. For full terms & conditions, our latest price list and inclusions please contact a New Home Consultant. Advertised prices are for the Hallmark Homes Greater Brisbane building area. Surcharges may apply outside this area. Hallmark Homes Pty Ltd ABN 57 007 959 524. QBCC 23846.





# MAKE YOUR *dream* A REALITY

Building a new home is one of life's most exciting milestones. But it's also one of life's biggest decisions, so it's not to be taken lightly. Hallmark Homes have a long history of stability and a flawless record.

We're passionate about building beautiful homes and genuinely care about our customers. We think it shows in everything we do, from the smooth building process to the superb quality finishes in all our homes.

[HALLMARKHOMES.COM.AU](https://hallmarkhomes.com.au)

1300 326 515



**Hallmark  
Homes**